



[Go to Product page](#)

Datasheet for ABIN515661
anti-VEGFD antibody (AA 1-354)

2 Images

Overview

Quantity:	100 µL
Target:	VEGFD (Figf)
Binding Specificity:	AA 1-354
Reactivity:	Human
Host:	Rabbit
Clonality:	Polyclonal
Conjugate:	This VEGFD antibody is un-conjugated
Application:	Western Blotting (WB), Immunoprecipitation (IP)

Product Details

Purpose:	Rabbit polyclonal antibody raised against a full-length human FIGF protein.
Immunogen:	FIGF (NP_004460.1, 1 a.a. ~ 354 a.a) full-length human protein.
Sequence:	MYREWVVNV FMMLYVQLVQ GSSNEHGPKV RSSQSTLERS EQQIRAASSL EELLRITHSE DWKLWRCRLR LKSFTSMDSR SASHRSTRFA ATFYDIETLK VIDEWQRTQ CSPRETCVEV ASELGKSTNT FFKPPCVNVF RCGGCCNEES LICMNTSTSY ISKQLFEISV PLTSVPELVP VKVANHTGCK CLPTAPRHPY SIIRRSIQIP EEDRCSHSHK LCPIDMLWDS NKCKCVLQEE NPLAGTEDHS HLQEPALCGP HMMFDEDRCE CVCKTPCPKD LIQHPKNCSC FECKESLET CQKHKLFHPD TCSCEDRCPF HTRPCASGKT ACAKHCRFPK EKRAAQGPHS RKNP
Cross-Reactivity:	Human
Characteristics:	Antibody reactive against mammalian transfected lysate.

Target Details

Target:	VEGFD (Figf)
Alternative Name:	FIGF (Figf Products)
Background:	Full Gene Name: c-fos induced growth factor (vascular endothelial growth factor D) Synonyms: VEGF-D, VEGFD
Gene ID:	2277
NCBI Accession:	NM_004469
Pathways:	RTK Signaling

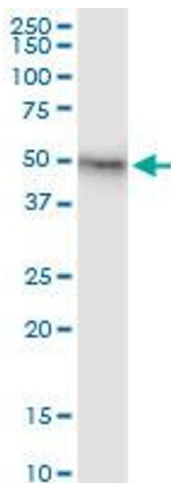
Application Details

Application Notes:	Optimal working dilution should be determined by the investigator.
Restrictions:	For Research Use only

Handling

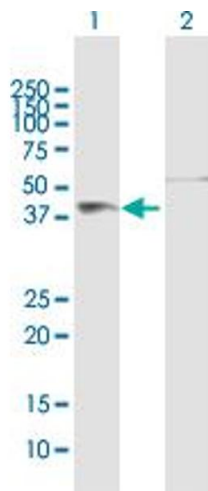
Format:	Liquid
Buffer:	No additive
Preservative:	Without preservative
Handling Advice:	Aliquot to avoid repeated freezing and thawing.
Storage:	-20 °C
Storage Comment:	Store at -20°C or lower. Aliquot to avoid repeated freezing and thawing.

Images



Immunoprecipitation

Image 1. Immunoprecipitation of FIGF transfected lysate using anti-FIGF MaxPab rabbit polyclonal antibody and Protein A Magnetic Bead, and immunoblotted with FIGF purified MaxPab mouse polyclonal antibody (B01P).



Western Blotting

Image 2. Western Blot analysis of FIGF expression in transfected 293T cell line by FIGF MaxPab polyclonal antibody.

Lane 1: FIGF transfected lysate(40.4 kDa).

Lane 2: Non-transfected lysate.