

Datasheet for ABIN515674
anti-FOXF1 antibody (AA 251-353)[Go to Product page](#)

1 Image

Overview

Quantity:	100 µg
Target:	FOXF1
Binding Specificity:	AA 251-353
Reactivity:	Human
Host:	Mouse
Clonality:	Monoclonal
Conjugate:	This FOXF1 antibody is un-conjugated
Application:	ELISA

Product Details

Purpose:	Mouse monoclonal antibody raised against a partial recombinant FOXF1.
Immunogen:	FOXF1 (NP_001442, 251 a.a. ~ 353 a.a) partial recombinant protein with GST tag. MW of the GST tag alone is 26 KDa.
Sequence:	AALNSGASYI KQQPLSPCNP AANPLSGSLS THSLEQPYLH QNSHNAPAEI QGIPRYHSQS PSMCDRKEFV FSFNAMASSS MHSAGGGSYY HQQVTYQDIK PCV
Clone:	3D1
Isotype:	IgG2a
Cross-Reactivity:	Human
Characteristics:	Antibody Reactive Against Recombinant Protein.

Target Details

Target:	FOXF1
Alternative Name:	FOXF1 (FOXF1 Products)
Background:	Full Gene Name: forkhead box F1 Synonyms: FKHL5,FREAC1,MGC105125
Gene ID:	2294
NCBI Accession:	NM_001451
Pathways:	Regulation of Leukocyte Mediated Immunity , Regulation of Muscle Cell Differentiation , Positive Regulation of Immune Effector Process

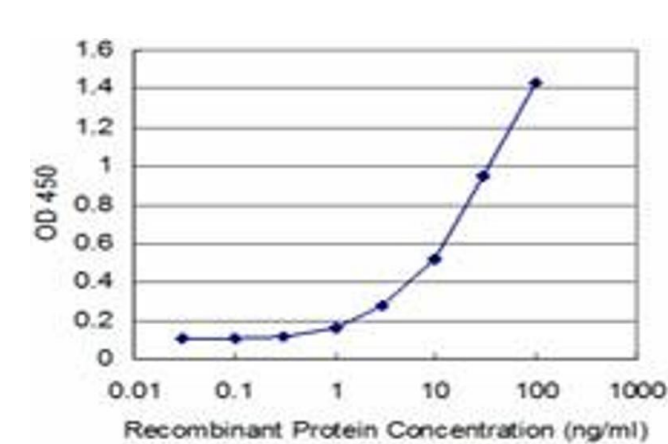
Application Details

Application Notes:	Optimal working dilution should be determined by the investigator.
Restrictions:	For Research Use only

Handling

Buffer:	In 1x PBS, pH 7.4
Handling Advice:	Aliquot to avoid repeated freezing and thawing.
Storage:	-20 °C
Storage Comment:	Store at -20°C or lower. Aliquot to avoid repeated freezing and thawing.

Images



ELISA

Image 1. Detection limit for recombinant GST tagged FOXF1 is approximately 1ng/ml as a capture antibody.