



[Go to Product page](#)

Datasheet for ABIN515680
anti-FOXF2 antibody (AA 207-340)

2 Images

Overview

Quantity:	100 µg
Target:	FOXF2
Binding Specificity:	AA 207-340
Reactivity:	Human
Host:	Mouse
Clonality:	Monoclonal
Conjugate:	This FOXF2 antibody is un-conjugated
Application:	ELISA, Western Blotting (WB)

Product Details

Purpose:	Mouse monoclonal antibody raised against a full length recombinant FOXF2.
Immunogen:	FOXF2 (NP_001443, 207 a.a. ~ 340 a.a) full length recombinant protein with GST tag. MW of the GST tag alone is 26 KDa.
Sequence:	YHRVVSGLGF GASLLPQGFDFQAPPSAPLGGCHSQGGYGGGLDMMPAGYDAGAGAPSHAHPH IECHSPYTSPAAHW
Clone:	2C7
Isotype:	IgG2a
Cross-Reactivity:	Human
Characteristics:	Antibody Reactive Against Recombinant Protein.

Target Details

Target:	FOXF2
Alternative Name:	FOXF2 (FOXF2 Products)
Background:	Full Gene Name: forkhead box F2 Synonyms: FKHL6,FREAC2
Gene ID:	2295
NCBI Accession:	NM_001452

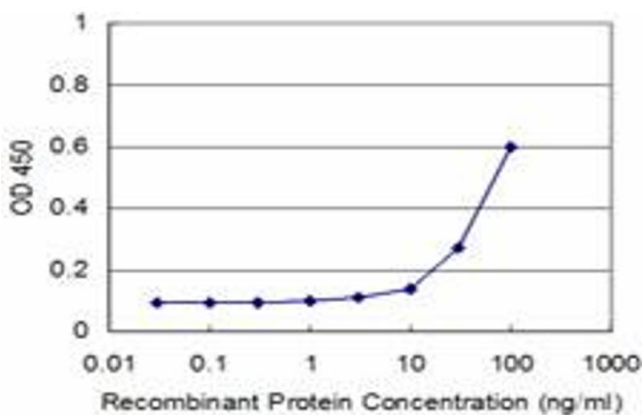
Application Details

Application Notes:	Optimal working dilution should be determined by the investigator.
Restrictions:	For Research Use only

Handling

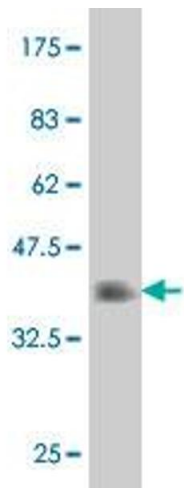
Buffer:	In 1x PBS, pH 7.4
Handling Advice:	Aliquot to avoid repeated freezing and thawing.
Storage:	-20 °C
Storage Comment:	Store at -20°C or lower. Aliquot to avoid repeated freezing and thawing.

Images



ELISA

Image 1. Detection limit for recombinant GST tagged FOXF2 is approximately 3ng/ml as a capture antibody.



Western Blotting

Image 2. Western Blot detection against Immunogen (40.74 kDa).