



[Go to Product page](#)

Datasheet for ABIN515765  
**anti-FLT3LG antibody (AA 27-136)**

3 Images

Overview

Quantity:	100 µg
Target:	FLT3LG
Binding Specificity:	AA 27-136
Reactivity:	Human
Host:	Mouse
Clonality:	Monoclonal
Conjugate:	This FLT3LG antibody is un-conjugated
Application:	Western Blotting (WB), ELISA, Proximity Ligation Assay (PLA)

Product Details

Purpose:	Mouse monoclonal antibody raised against a partial recombinant FLT3LG.
Immunogen:	FLT3LG (NP_001450, 27 a.a. ~ 136 a.a) partial recombinant protein with GST tag. MW of the GST tag alone is 26 KDa.
Sequence:	TQDCSFQHSP ISSDFAVKIR ELSDYLLQDY PVTVASNLQD EELCGGLWRL VLAQRWMERL KTVAGSKMQG LLERVNTEIH FVTKCAFQPP PSCLRFVQTN ISRLQETSE
Clone:	4C4
Isotype:	IgG2a
Cross-Reactivity:	Human
Characteristics:	Antibody Reactive Against Recombinant Protein.

## Target Details

Target:	FLT3LG
Alternative Name:	FLT3LG ( <a href="#">FLT3LG Products</a> )
Background:	Full Gene Name: fms-related tyrosine kinase 3 ligand Synonyms: FL
Gene ID:	2323
NCBI Accession:	<a href="#">NM_001459</a>
Pathways:	<a href="#">RTK Signaling</a>

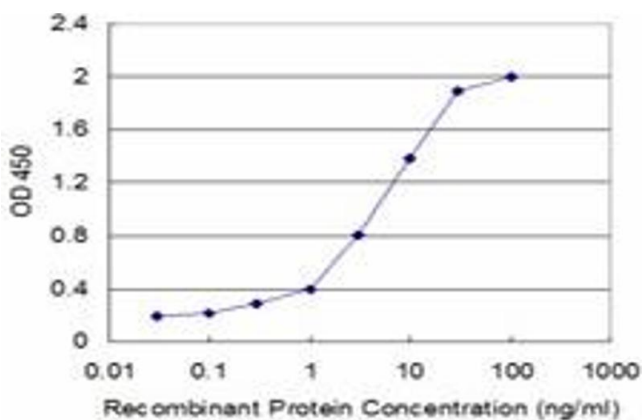
## Application Details

Application Notes:	Optimal working dilution should be determined by the investigator.
Restrictions:	For Research Use only

## Handling

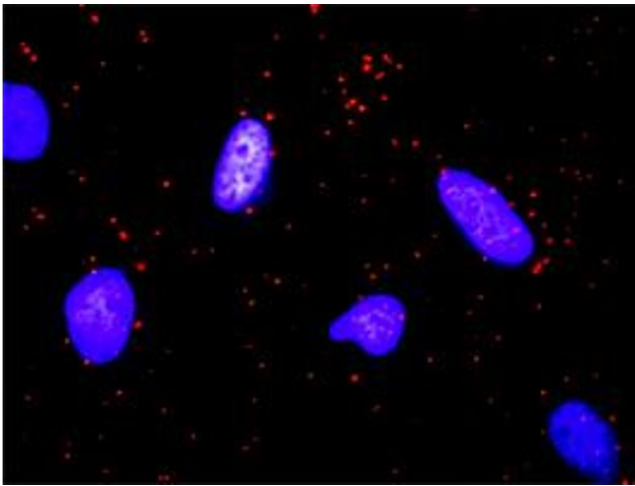
Buffer:	In 1x PBS, pH 7.4
Handling Advice:	Aliquot to avoid repeated freezing and thawing.
Storage:	-20 °C
Storage Comment:	Store at -20°C or lower. Aliquot to avoid repeated freezing and thawing.

## Images



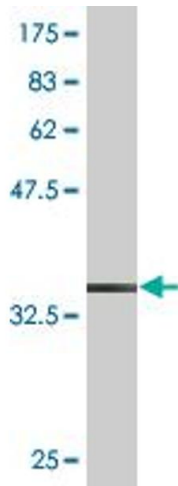
### ELISA

**Image 1.** Detection limit for recombinant GST tagged FLT3LG is approximately 0.03ng/ml as a capture antibody.



### Proximity Ligation Assay

**Image 2.** Proximity Ligation Analysis of protein-protein interactions between KITLG and FLT3LG. HeLa cells were stained with anti-KITLG rabbit purified polyclonal 1:1200 and anti-FLT3LG mouse monoclonal antibody 1:50. Each red dot represents the detection of protein-protein interaction complex, and nuclei were counterstained with DAPI (blue).



### Western Blotting

**Image 3.** Western Blot detection against Immunogen (37.84 kDa).