



[Go to Product page](#)

Datasheet for ABIN515849

anti-ADAM2 antibody (AA 376-475)

3 Images

Overview

Quantity:	100 µg
Target:	ADAM2
Binding Specificity:	AA 376-475
Reactivity:	Human
Host:	Mouse
Clonality:	Monoclonal
Conjugate:	This ADAM2 antibody is un-conjugated
Application:	Western Blotting (WB), ELISA

Product Details

Purpose:	Mouse monoclonal antibody raised against a partial recombinant ADAM2.
Immunogen:	ADAM2 (NP_001455, 376 a.a. ~ 475 a.a) partial recombinant protein with GST tag. MW of the GST tag alone is 26 KDa.
Sequence:	RLDPFFKQQA VCGNAKLEAG EECDCGTEQD CALIGETCCD IATCRFKAGS NCAEGPCCEN CLFMSKERMC RPSFEECDLP EYCNGSSASC PENHYVQTGH
Clone:	1B8
Isotype:	IgG2a
Cross-Reactivity:	Human
Characteristics:	Antibody Reactive Against Recombinant Protein.

Target Details

Target:	ADAM2
Alternative Name:	ADAM2 (ADAM2 Products)
Background:	Full Gene Name: ADAM metallopeptidase domain 2 Synonyms: CRYN1,CRYN2,FTNB,PH-30b,PH30
Gene ID:	2515
NCBI Accession:	NM_001464

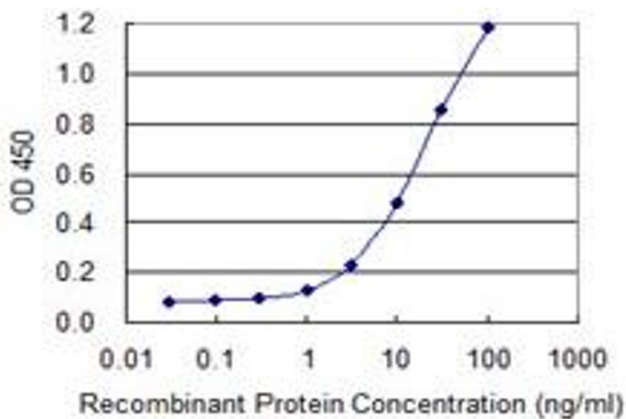
Application Details

Application Notes:	Optimal working dilution should be determined by the investigator.
Restrictions:	For Research Use only

Handling

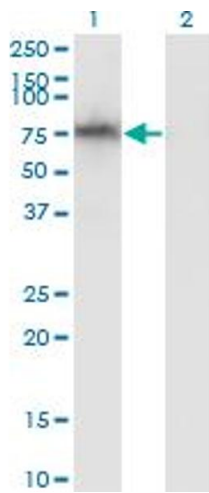
Buffer:	In 1x PBS, pH 7.4
Handling Advice:	Aliquot to avoid repeated freezing and thawing.
Storage:	-20 °C
Storage Comment:	Store at -20°C or lower. Aliquot to avoid repeated freezing and thawing.

Images



ELISA

Image 1. Detection limit for recombinant GST tagged ADAM2 is 1 ng/ml as a capture antibody.

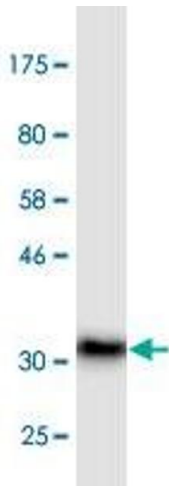


Western Blotting

Image 2. Western Blot analysis of ADAM2 expression in transfected 293T cell line by ADAM2 monoclonal antibody (M02), clone 1B8.

Lane 1: ADAM2 transfected lysate (Predicted MW: 64.8 KDa).

Lane 2: Non-transfected lysate.



Western Blotting

Image 3. Western Blot detection against Immunogen (36.74 KDa).