



Datasheet for ABIN515873
anti-FYN antibody (AA 1-537)



[Go to Product page](#)

3 Images

1 Publication

Overview

Quantity:	100 µg
Target:	FYN
Binding Specificity:	AA 1-537
Reactivity:	Human
Host:	Rabbit
Clonality:	Polyclonal
Conjugate:	This FYN antibody is un-conjugated
Application:	Western Blotting (WB), Proximity Ligation Assay (PLA)

Product Details

Purpose:	Rabbit polyclonal antibody raised against a full-length human FYN protein.
Immunogen:	FYN (NP_002028.1, 1 a.a. ~ 537 a.a) full-length human protein.
Sequence:	MGCVQCKDKE ATKLTEERDG SLNQSSGYRY GTDPTPQHYP SFGVTSIPNY NNFHAAGGQG LTVFGGVNSS SHTGTLRTRG GTGVTLFVAL YDYEARTEDD LSFHKGEKFQ ILNSSEGDWW EARSLTTGET GYIPSNYVAP VDSIQAEWY FGKLGRKDAE RQLLSFGNPR GTFLIRESET TKGAYSLSIR DWDDMKGDHV KHYKIRKLDN GGYITTRAQ FETLQQLVQH YSERAAGLCC RLVVPCHKGM PRLTDL SVKT KDVWEIPRES LQLIKRLGNG QFGEVWMGTW NGNTKVAIKT LKPGMTSPES FLEEAQIMKK LKHDKLVQLY AVVSEPIYI VTEYMNKGSL LDFLKDGEGR ALKLPNLVDM AAQVAAGMAY IERMNYIHRD LRSANILVGN GLICKIADFG LARLIEDNEY TARQGAKFPI KWTAPEAALY GRFTIKSDVW SFGILLTELV TKGRVPYPGM NNREVLEQVE RGYRMPCPQD CPISLHELMI HCWKKDPEER PTFEYLSQFL EDYFTATEPQ YQPGENL

Product Details

Cross-Reactivity:	Human
Characteristics:	Antibody reactive against mammalian transfected lysate.

Target Details

Target:	FYN
Alternative Name:	FYN (FYN Products)
Background:	Full Gene Name: FYN oncogene related to SRC, FGR, YES Synonyms: MGC45350,SLK,SYN
Gene ID:	2534
NCBI Accession:	NM_002037
Pathways:	JAK-STAT Signaling , TCR Signaling , Fc-epsilon Receptor Signaling Pathway , EGFR Signaling Pathway , Neurotrophin Signaling Pathway , Feeding Behaviour , CXCR4-mediated Signaling Events , Signaling Events mediated by VEGFR1 and VEGFR2 , Activated T Cell Proliferation , Thromboxane A2 Receptor Signaling

Application Details

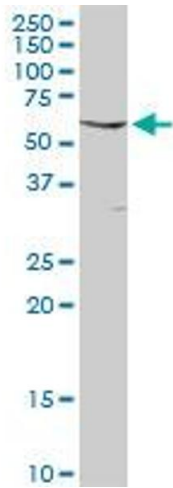
Application Notes:	Optimal working dilution should be determined by the investigator.
Restrictions:	For Research Use only

Handling

Buffer:	In 1x PBS, pH 7.4
Handling Advice:	Aliquot to avoid repeated freezing and thawing.
Storage:	-20 °C
Storage Comment:	Store at -20°C or lower. Aliquot to avoid repeated freezing and thawing.

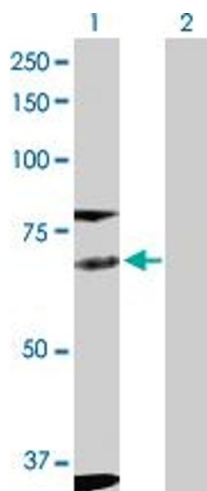
Publications

Product cited in:	Liu, Chen, Chau, Jan, Chen, Hsu, Lin, Juang, Lu, Cheng, Chen, Chang, Ting, Kao, Hsiao, Huang: "Analysis of protein-protein interactions in cross-talk pathways reveals CRKL protein as a novel prognostic marker in hepatocellular carcinoma." in: Molecular & cellular proteomics : MCP , Vol. 12, Issue 5, pp. 1335-49, (2013) (PubMed).
-------------------	---



Western Blotting

Image 1. FYN MaxPab rabbit polyclonal antibody. Western Blot analysis of FYN expression in HeLa.

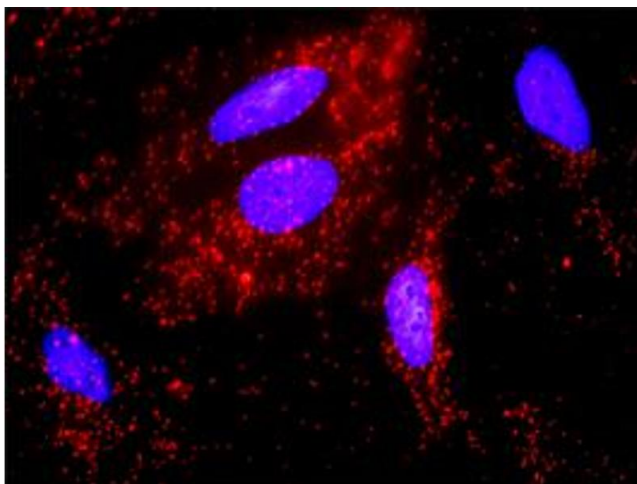


Western Blotting

Image 2. Western Blot analysis of FYN expression in transfected 293T cell line by FYN MaxPab polyclonal antibody.

Lane 1: FYN transfected lysate(60.80 KDa).

Lane 2: Non-transfected lysate.



Proximity Ligation Assay

Image 3. Proximity Ligation Analysis of protein-protein interactions between FYN and CTNNB1. HeLa cells were stained with anti-FYN rabbit purified polyclonal 1:1200 and anti-CTNNB1 mouse monoclonal antibody 1:50. Each red dot represents the detection of protein-protein interaction complex, and nuclei were counterstained with DAPI (blue).