

Datasheet for ABIN515961
anti-GBE1 antibody (AA 1-702)



[Go to Product page](#)

2 Images

Overview

Quantity:	50 µg
Target:	GBE1
Binding Specificity:	AA 1-702
Reactivity:	Human
Host:	Mouse
Clonality:	Polyclonal
Conjugate:	This GBE1 antibody is un-conjugated
Application:	Western Blotting (WB)

Product Details

Purpose:	Mouse polyclonal antibody raised against a full-length human GBE1 protein.
Immunogen:	GBE1 (AAH12098.1, 1 a.a. ~ 702 a.a) full-length human protein.
Sequence:	MAAPMTPAAR PEDYEAALNA ALADVPELAR LLEIDPYLKP YAVDFQRRYK QFSQILKNIG ENEGGIDKFS RGYESFGVHR CADGGLYCKE WAPGAEGVFL TGDFNGWNPV SYPYKKLDYG KWELYIPPKQ NKSVLVPHGS KLKVVITSKS GEILYRISPW AKYVVREGDN VNYDWIHWDP EHSYEFKHSR PPKPRSLRIY ESHVGISSHE GKVASYPKHFT CNVLPRIKGL GYNCIQLMAI MEHAYYASFG YQITSFFAAS SRYGSPEELQ ELVDTAHSMT IIVLLDVVHS HASKNSADGL NMF DGTDCY FHSGPRGTHD LWDSRLFAYS SWEVLRFLLS NIRWWLEEYR FDGFRFDGVT SMLYHHHGVG QGFSGDYSEY FGLQVDEAL TYLMLANHLV HTLCPDSITI AEDVSGMPAL CSPISQGGGG FDYRLAMAIP DKWIQLLKEF KDEDWNMGDI VYTLNRRYL EKCIAYAESH DQALVGDKSL AFWLMDAEMY TNMSVLTPFT PVIDRGIQLH KMIRLITHGL GGEGYLNFMG NEFGHPEWLD FPRKGNNESY HYARRQFHLT DDDLLRYKFL NNFDRDMNRL EERYGWLAAP

Product Details

QAYVSEKHEG NKIIAFERAG LLFIFNFHPS KSYTDYRVGT ALPGKFKIVL DSDAAEYGGH
QRLDHSTDFE SEAFEHNGRP YSLLVYIPSR VALILQNVDL PN

Cross-Reactivity: Human

Characteristics: Antibody reactive against mammalian transfected lysate.

Target Details

Target: GBE1

Alternative Name: GBE1 ([GBE1 Products](#))

Background: Full Gene Name: glucan (1,4-alpha-), branching enzyme 1
Synonyms: GBE

Gene ID: 2632

Pathways: [Cellular Glucan Metabolic Process](#)

Application Details

Application Notes: Optimal working dilution should be determined by the investigator.

Restrictions: For Research Use only

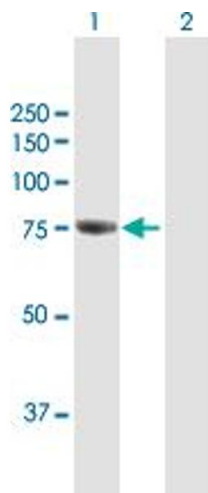
Handling

Buffer: In 1x PBS, pH 7.4

Handling Advice: Aliquot to avoid repeated freezing and thawing.

Storage: -20 °C

Storage Comment: Store at -20°C or lower. Aliquot to avoid repeated freezing and thawing.

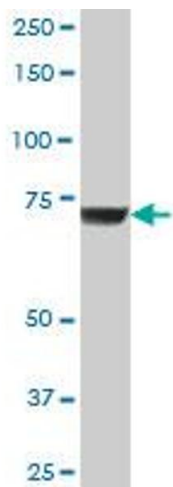


Western Blotting

Image 1. Western Blot analysis of GBE1 expression in transfected 293T cell line by GBE1 MaxPab polyclonal antibody.

Lane 1: GBE1 transfected lysate(77.22 KDa).

Lane 2: Non-transfected lysate.



Western Blotting

Image 2. GBE1 MaxPab polyclonal antibody. Western Blot analysis of GBE1 expression in human liver.