

Datasheet for ABIN515978
anti-GCDH antibody (AA 1-438)



[Go to Product page](#)

3 Images

Overview

Quantity:	50 µL
Target:	GCDH
Binding Specificity:	AA 1-438
Reactivity:	Human
Host:	Mouse
Clonality:	Polyclonal
Conjugate:	This GCDH antibody is un-conjugated
Application:	Western Blotting (WB), Immunofluorescence (IF)

Product Details

Purpose:	Mouse polyclonal antibody raised against a full-length human GCDH protein.
Immunogen:	GCDH (NP_000150.1, 1 a.a. ~ 438 a.a) full-length human protein.
Sequence:	MALRGVSVRL LSRGPGHLHVL RTWVSSAAQT EKGGR TQSQL AKSSRPEFDW QDPLVLEEQL TTDEILIRDT FRTYCQERLM PRILLANRNE VFHREIISEM GELGVLGPTI KGYGCAGVSS VAYGLLAREL ERVDSGYRSA MSVQSSLVMH PIYAYGSEEQ RQKYLPLAK GELLGCFGLT EPNSGSDPSS METRAHYNSS NKSYTTLNGTK TWITNSPMAD LFWVWARCED GCIRGFLEK GMRGLSAPRI QGKFSLRASA TGMIIIDGVE VPEENVLPGA SSLGGPFGCL NNARYGIAWG VLGASEFCLH TARQYALDRM QFGVPLARNQ LIQKKLADML TEITLGLHAC LQLGRLKDQD KAAPMVSL LKRNCGKALD IARQARDMLG GNGISDEYHV IRHAMNLEAV NTYEGTHDIH ALILGRAITG IQAFTASK
Cross-Reactivity:	Human

Product Details

Characteristics: Antibody reactive against mammalian transfected lysate.

Target Details

Target: GCDH

Alternative Name: GCDH ([GCDH Products](#))

Background: Full Gene Name: glutaryl-Coenzyme A dehydrogenase
Synonyms: ACAD5,GCD

Gene ID: 2639

NCBI Accession: [NM_000159](#)

Application Details

Application Notes: Optimal working dilution should be determined by the investigator.

Restrictions: For Research Use only

Handling

Format: Liquid

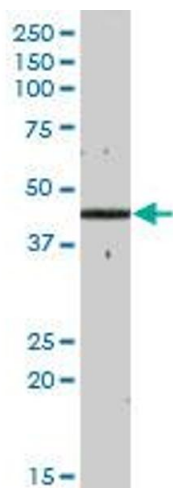
Buffer: No additive

Preservative: Without preservative

Handling Advice: Aliquot to avoid repeated freezing and thawing.

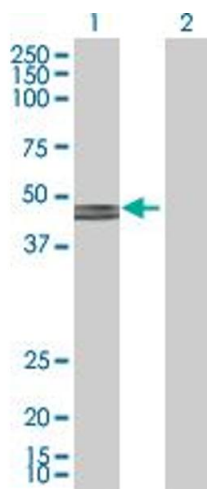
Storage: -20 °C

Storage Comment: Store at -20°C or lower. Aliquot to avoid repeated freezing and thawing.



Western Blotting

Image 1. GCDH MaxPab polyclonal antibody. Western Blot analysis of GCDH expression in human liver.

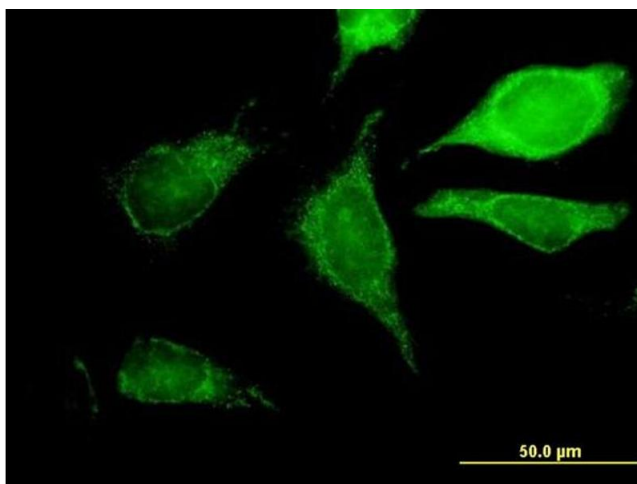


Western Blotting

Image 2. Western Blot analysis of GCDH expression in transfected 293T cell line by GCDH MaxPab polyclonal antibody.

Lane 1: GCDH transfected lysate(48.18 KDa).

Lane 2: Non-transfected lysate.



Immunofluorescence

Image 3. Immunofluorescence of purified MaxPab antibody to GCDH on HeLa cell. [antibody concentration 10 ug/ml]