



[Go to Product page](#)

Datasheet for ABIN515982  
**anti-GCH1 antibody (AA 1-250)**

2 Images

Overview

Quantity:	50 µg
Target:	GCH1
Binding Specificity:	AA 1-250
Reactivity:	Human
Host:	Mouse
Clonality:	Polyclonal
Conjugate:	This GCH1 antibody is un-conjugated
Application:	Western Blotting (WB), Immunofluorescence (IF)

Product Details

Purpose:	Mouse polyclonal antibody raised against a full-length human GCH1 protein.
Immunogen:	GCH1 (NP_000152.1, 1 a.a. ~ 250 a.a) full-length human protein.
Sequence:	MEKGPVRAPA EKPRGARCSN GFPERDPPRP GPSRPAEKPP RPEAKSAQPA DGWKGERPRS EEDNELNLPN LAAAYSSILS SLGENPQRQG LLKTPWRAAS AMQFFTKGYQ ETISDVLNDA IFDEDHDEMIVKIDIDMFSM CEHHLVPFVG KVHIGYLPNK QVLGLSKLAR IVEIYSRRLQ VQERLTKQIA VAITEALRPA GVGVVVEATH MCMVMRGVQK MNSKTVTSTM LGVFREDPKT REEFLTLIRS
Cross-Reactivity:	Human
Characteristics:	Antibody reactive against mammalian transfected lysate.

## Target Details

Target:	GCH1
Alternative Name:	GCH1 ( <a href="#">GCH1 Products</a> )
Background:	Full Gene Name: GTP cyclohydrolase 1 Synonyms: DYT14,DYT5,GCH,GTP-CH-1,GTPCH1
Gene ID:	2643
NCBI Accession:	<a href="#">NM_000161</a>

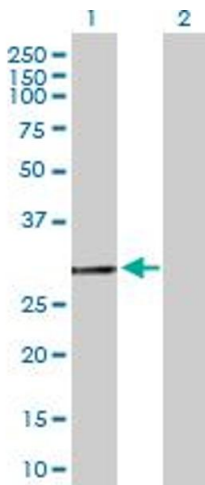
## Application Details

Application Notes:	Optimal working dilution should be determined by the investigator.
Restrictions:	For Research Use only

## Handling

Buffer:	In 1x PBS, pH 7.4
Handling Advice:	Aliquot to avoid repeated freezing and thawing.
Storage:	-20 °C
Storage Comment:	Store at -20°C or lower. Aliquot to avoid repeated freezing and thawing.

## Images

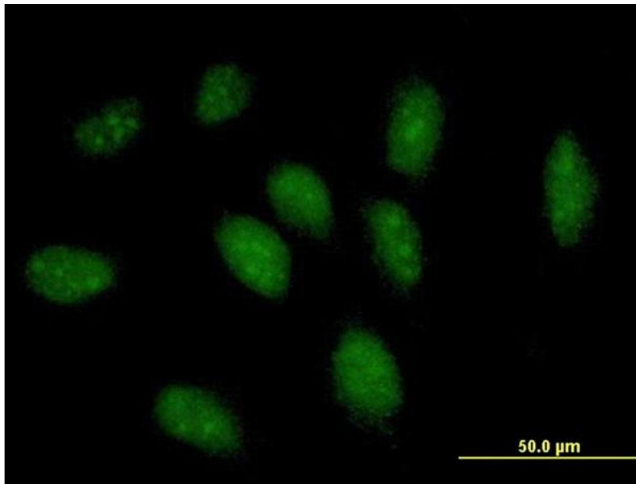


### Western Blotting

**Image 1.** Western Blot analysis of GCH1 expression in transfected 293T cell line by GCH1 MaxPab polyclonal antibody.

Lane 1: GCH1 transfected lysate(27.5 KDa).

Lane 2: Non-transfected lysate.



### Immunofluorescence

**Image 2.** Immunofluorescence of purified MaxPab antibody to GCH1 on HeLa cell. [antibody concentration 10 ug/ml]