



Datasheet for ABIN516005
anti-GDF10 antibody (AA 1-478)



[Go to Product page](#)

1 Image

1 Publication

Overview

Quantity:	50 µg
Target:	GDF10
Binding Specificity:	AA 1-478
Reactivity:	Human
Host:	Mouse
Clonality:	Polyclonal
Conjugate:	This GDF10 antibody is un-conjugated
Application:	Western Blotting (WB)

Product Details

Purpose:	Mouse polyclonal antibody raised against a full-length human GDF10 protein.
Immunogen:	GDF10 (NP_004953, 1 a.a. ~ 478 a.a) full-length human protein.
Sequence:	MAHVPARTSP GPGPQLLLLL LPLFLLLLRD VAGSHRAPAW SALPAAADGL QGDRDLQRHP GDAAATLGPS AQDMVAVHMH RLYEKYSRQG ARPGGGNTVR SFRARLEVVD QKAVYFFNLT SMQDSEMILT ATFFHYSEPP RWPRALEVLC KPRAKNASGR PLPLGPTRQ HLLFRSLSQN TATQGLLRGA MALAPPRGL WQAKDISPIV KAARRDGELL LSAQLDSEER DPGVPRPSPY APYILVYAND LAISEPNSVA VTLQRYDPPF AGDPEPRAAP NNSADPRVRR AAQATGPLQD NELPGLDERP PRAHAQHFK HQLWPSPFRA LKPRPGRKDR RKKGQEVFMA ASQVLDLDFEK TMQKARRKQW DEPRVCSRRY LKVDVFADIGW NEWIISPKSF DAYYCAGACE FPMPKIVRPS NHATIQSIVR AVGIIPGIPE PCCVPDKMNS LGVLFLENR NVVLKVYPNM SVDTCACR
Cross-Reactivity:	Human

Product Details

Characteristics: Antibody reactive against mammalian transfected lysate.

Target Details

Target: GDF10

Alternative Name: GDF10 ([GDF10 Products](#))

Background: Full Gene Name: growth differentiation factor 10
Synonyms: BMP-3b,BMP3B

Gene ID: 2662

NCBI Accession: [NM_004962](#)

Application Details

Application Notes: Optimal working dilution should be determined by the investigator.

Restrictions: For Research Use only

Handling

Buffer: In 1x PBS, pH 7.4

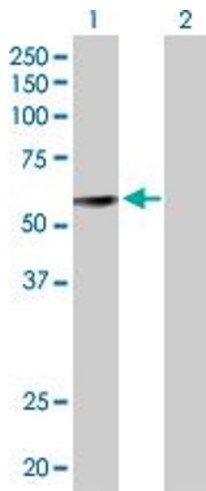
Handling Advice: Aliquot to avoid repeated freezing and thawing.

Storage: -20 °C

Storage Comment: Store at -20°C or lower. Aliquot to avoid repeated freezing and thawing.

Publications

Product cited in: Cheng, Hsiao, Fan, Lo, Tzen, Wu, Fang, Cheng, Chen, Chang, Jiang, Chang, Lee: "Loss of GDF10/BMP3b as a prognostic marker collaborates with TGFBR3 to enhance chemotherapy resistance and epithelial-mesenchymal transition in oral squamous cell carcinoma." in: **Molecular carcinogenesis**, (2015) ([PubMed](#)).



Western Blotting

Image 1. Western Blot analysis of GDF10 expression in transfected 293T cell line by GDF10 MaxPab polyclonal antibody.

Lane1:GDF10 transfected lysate(52.58 KDa).

Lane2:Non-transfected lysate.