

Datasheet for ABIN516010 **anti-GDNF antibody (AA 1-211)**



[Go to Product page](#)

1 Image

Overview

Quantity:	100 µg
Target:	GDNF
Binding Specificity:	AA 1-211
Reactivity:	Human
Host:	Rabbit
Clonality:	Polyclonal
Conjugate:	This GDNF antibody is un-conjugated
Application:	Western Blotting (WB)

Product Details

Purpose:	Rabbit polyclonal antibody raised against a full-length human GDNF protein.
Immunogen:	GDNF (NP_000505.1, 1 a.a. ~ 211 a.a) full-length human protein.
Sequence:	MKLWDVAVC LVLLHTASAF PLPAGKRPPE APAEDRSLGR RRAPFALSSD SNMPEDYPDQ FDDVMDFIQA TIKRLKRSPD QMAVLPRE RNRQAAAANP ENSRGKGRRG QRGKNRGCVL TAIHLNVTDL GLGYETKEEL IFRYCSGSCD AAETTYDKIL KNLSRNRLV SDKVQGACCR PIAFDDLSF LDDNLVYHIL RKHSAKRCGC I
Cross-Reactivity:	Human
Characteristics:	Antibody reactive against mammalian transfected lysate.

Target Details

Target:	GDNF
---------	------

Target Details

Alternative Name:	GDNF (GDNF Products)
Background:	Full Gene Name: glial cell derived neurotrophic factor Synonyms: ATF1,ATF2,HFB1-GDNF
Gene ID:	2668
NCBI Accession:	NM_000514
Pathways:	RTK Signaling , Synaptic Membrane , Tube Formation , Autophagy , Smooth Muscle Cell Migration

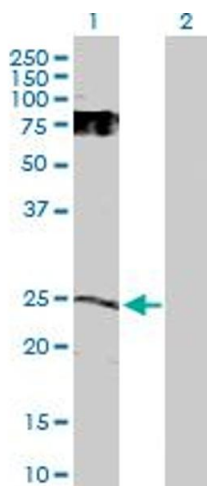
Application Details

Application Notes:	Optimal working dilution should be determined by the investigator.
Restrictions:	For Research Use only

Handling

Buffer:	In 1x PBS, pH 7.4
Handling Advice:	Aliquot to avoid repeated freezing and thawing.
Storage:	-20 °C
Storage Comment:	Store at -20°C or lower. Aliquot to avoid repeated freezing and thawing.

Images



Western Blotting

Image 1. Western Blot analysis of GDNF expression in transfected 293T cell line by GDNF MaxPab polyclonal antibody.

Lane 1: GDNF transfected lysate(23.70 KDa).

Lane 2: Non-transfected lysate.