



Datasheet for ABIN516030

## anti-Intrinsic Factor antibody (AA 1-417)



[Go to Product page](#)

2 Images

1 Publication

### Overview

Quantity:	100 µg
Target:	Intrinsic Factor (GIF)
Binding Specificity:	AA 1-417
Reactivity:	Human
Host:	Rabbit
Clonality:	Polyclonal
Conjugate:	This Intrinsic Factor antibody is un-conjugated
Application:	Western Blotting (WB)

### Product Details

Purpose:	Rabbit polyclonal antibody raised against a full-length human GIF protein.
Immunogen:	GIF (NP_005133.2, 1 a.a. ~ 417 a.a) full-length human protein.
Sequence:	MAWFALYLLS LLWATAGTST QTQSSCSVPS AQEPLVNGIQ VLMENSVTSS AYPNPSILIA MNLGAYNLK AQKLLTYQLM SSDNNDLTIG QLGLTIMALT SSCRDPGDKV SILQRQMENW APSSPNAEAS AFYGPSLAIL ALCQKNSEAT LPIAVRFAKT LLANSSPFNV DTGAMATLAL TCMYNKIPVG SEEGYRSLFG QVLKDIVEKI SMKIKDNGII GDIYSTGLAM QALSVTPEPS KKEWNCKKTT DMILNEIKQG KFHNPMISIAQ ILPSLKGKTY LDVPQVTCSP DHEVQPTLPS NPGPGPTSAS NITVIYTINN QLRGVLELFN ETINVSVKSG SVLLVVLEEA QRKNPMFKFE TTMTSWGLVV SSINNIAENV NHKTYWQFLS GVTPLNEGVA DYIPFNHEHI TANFTQY
Cross-Reactivity:	Human, Mouse
Characteristics:	Antibody reactive against mammalian transfected lysate.

## Target Details

---

Target:	Intrinsic Factor (GIF)
Alternative Name:	GIF ( <a href="#">GIF Products</a> )
Background:	Full Gene Name: gastric intrinsic factor (vitamin B synthesis) Synonyms: IF,IFMH,INF,TCN3
Gene ID:	2694
NCBI Accession:	<a href="#">NM_005142</a>

## Application Details

---

Application Notes:	Optimal working dilution should be determined by the investigator.
Restrictions:	For Research Use only

## Handling

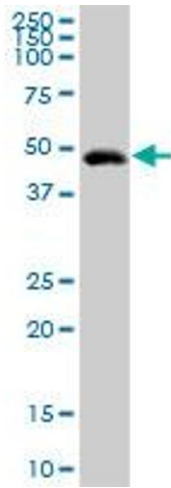
---

Buffer:	In 1x PBS, pH 7.4
Handling Advice:	Aliquot to avoid repeated freezing and thawing.
Storage:	-20 °C
Storage Comment:	Store at -20°C or lower. Aliquot to avoid repeated freezing and thawing.

## Publications

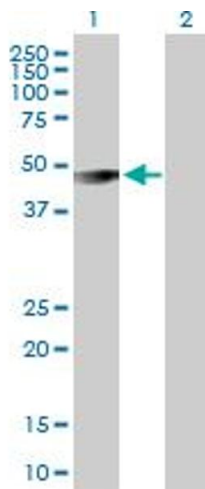
---

Product cited in:	Maloum, Allaire, Gagné-Sansfaçon, Roy, Belleville, Sarret, Morisset, Carrier, Mishina, Kaestner, Perreault: "Epithelial BMP signaling is required for proper specification of epithelial cell lineages and gastric endocrine cells." in: <b>American journal of physiology. Gastrointestinal and liver physiology</b> , Vol. 300, Issue 6, pp. G1065-79, (2011) ( <a href="#">PubMed</a> ).
-------------------	---



#### Western Blotting

**Image 1.** GIF MaxPab rabbit polyclonal antibody. Western Blot analysis of GIF expression in mouse stomach.



#### Western Blotting

**Image 2.** Western Blot analysis of GIF expression in transfected 293T cell line by GIF MaxPab polyclonal antibody.

Lane 1: GIF transfected lysate(45.40 KDa).

Lane 2: Non-transfected lysate.