



[Go to Product page](#)

Datasheet for ABIN516049
anti-GLA antibody (AA 1-429)

2 Images

Overview

Quantity:	50 µg
Target:	GLA
Binding Specificity:	AA 1-429
Reactivity:	Human
Host:	Mouse
Clonality:	Polyclonal
Conjugate:	This GLA antibody is un-conjugated
Application:	Western Blotting (WB)

Product Details

Purpose:	Mouse polyclonal antibody raised against a full-length human GLA protein.
Immunogen:	GLA (NP_000160.1, 1 a.a. ~ 429 a.a) full-length human protein.
Sequence:	<p>MQLRNPELHL GCALALRFLA LVSWDIPGAR ALDNGLARTP TMGWLHWERF MCNLDCQEEP DSCISEKLFM EMAELMVSEG WKDAGYEYLC IDDCWMAPQR DSEGRLQADP QRFPHGIRQL ANYVHSKGLK LGIYADVGNK TCAGFPGSFG YYDIDAQTFA DWGVDLLKFD GCYCDSLENL ADGYKHMSLA LNRTGRSIVY SCEWPLYMWP FQKPNYTEIR QYCNHWRNFA DIDDSWKSİK SILDWTSFNQ ERIVDVAGPG GWNDPDLVI GNFGLSWNQQ VTQMALWAIM AAPLFMSNDL RHISPQAKAL LQDKDVIIN QDPLGKQGYQ LRQGDNFEVW ERPLSGLAWA VAMINRQEIG GPRSYTIAVA SLGKGVACNP ACFITQLLPV KRKLGFEYEW SRLRSHINPT GTVLLQLENT MQMSLKDLL</p>
Cross-Reactivity:	Human

Product Details

Characteristics: Antibody reactive against mammalian transfected lysate.

Target Details

Target: GLA

Alternative Name: GLA ([GLA Products](#))

Background: Full Gene Name: galactosidase, alpha
Synonyms: GALA

Gene ID: 2717

NCBI Accession: [NM_000169](#)

Pathways: [SARS-CoV-2 Protein Interactome](#)

Application Details

Application Notes: Optimal working dilution should be determined by the investigator.

Restrictions: For Research Use only

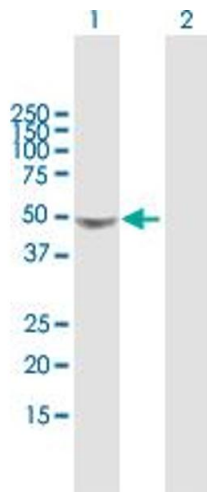
Handling

Buffer: In 1x PBS, pH 7.4

Handling Advice: Aliquot to avoid repeated freezing and thawing.

Storage: -20 °C

Storage Comment: Store at -20°C or lower. Aliquot to avoid repeated freezing and thawing.

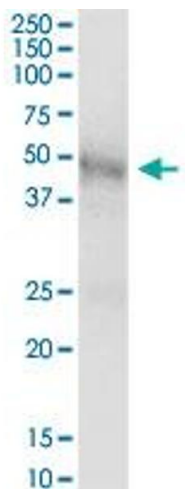


Western Blotting

Image 1. Western Blot analysis of GLA expression in transfected 293T cell line by GLA MaxPab polyclonal antibody.

Lane 1: GLA transfected lysate(48.80 KDa).

Lane 2: Non-transfected lysate.



Western Blotting

Image 2. GLA MaxPab polyclonal antibody. Western Blot analysis of GLA expression in human kidney.