



Datasheet for ABIN516058
anti-GCLM antibody (AA 1-274)



[Go to Product page](#)

3 Images

4 Publications

Overview

Quantity:	100 µg
Target:	GCLM
Binding Specificity:	AA 1-274
Reactivity:	Human
Host:	Mouse
Clonality:	Monoclonal
Conjugate:	This GCLM antibody is un-conjugated
Application:	Western Blotting (WB), ELISA

Product Details

Purpose:	Mouse monoclonal antibody raised against a full length recombinant GCLM.
Immunogen:	GCLM (AAH41809, 1 a.a. ~ 274 a.a) full-length recombinant protein with GST tag. MW of the GST tag alone is 26 KDa.
Sequence:	MGTDSRAAKA LLARARTLHL QTGNLLNWGR LRKKCPSTHS EELHDCIQKT LNEWSSQINP DLVREFPDVL ECTVSHAVEK INPDEREEMK VSAKLFIVES NSSSSTRSAV DMACSVLGVA QLDSVIIASP PIEDGVNLSL EHLQPYWEEL ENLVQSKKIV AIGTSDLDKT QLEQLYQWAQ VKPNSNQVNL ASCCVMPDL TAFKQFDIQ LLTHNDPKEL LSGASFQEAL QESIPDIQAH EWWPLWLLRY SVIVKSRGII KSKGYILQAK RRGs
Clone:	2B8
Isotype:	IgG2a
Cross-Reactivity:	Human

Product Details

Characteristics: Antibody Reactive Against Recombinant Protein.

Target Details

Target: GCLM

Alternative Name: GCLM ([GCLM Products](#))

Background: Full Gene Name: glutamate-cysteine ligase, modifier subunit
Synonyms: GLCLR

Gene ID: 2730

Application Details

Application Notes: Optimal working dilution should be determined by the investigator.

Restrictions: For Research Use only

Handling

Buffer: In 1x PBS, pH 7.4

Handling Advice: Aliquot to avoid repeated freezing and thawing.

Storage: -20 °C

Storage Comment: Store at -20°C or lower. Aliquot to avoid repeated freezing and thawing.

Publications

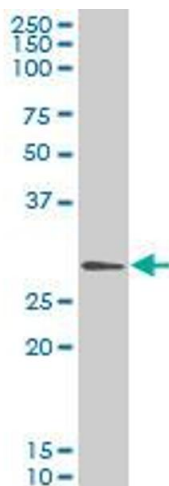
Product cited in: Sharon, Mor, Golan-lev, Fainsod, Benvenisty: "Molecular and functional characterizations of gastrula organizer cells derived from human embryonic stem cells." in: **Stem cells (Dayton, Ohio)**, Vol. 29, Issue 4, pp. 600-8, (2011) ([PubMed](#)).

Abel, Bubel, Simper, Powell, McClellan, Andreeff, MacLeod, DiGiovanni: "Protection against 2-chloroethyl ethyl sulfide (CEES)-induced cytotoxicity in human keratinocytes by an inducer of the glutathione detoxification pathway." in: **Toxicology and applied pharmacology**, Vol. 255, Issue 2, pp. 176-83, (2011) ([PubMed](#)).

Hardwick, Fisher, Canet, Lake, Cherrington: "Diversity in antioxidant response enzymes in progressive stages of human nonalcoholic fatty liver disease." in: **Drug metabolism and disposition: the biological fate of chemicals**, Vol. 38, Issue 12, pp. 2293-301, (2010) ([PubMed](#)).

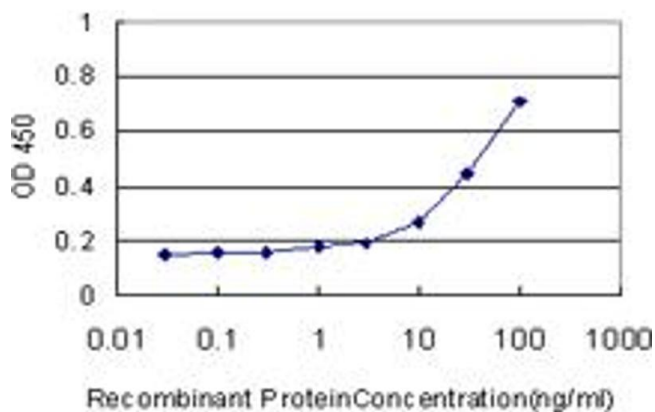
Balamurugan, Akhoy, Selvaraj, Pugazhenth: "Induction of antioxidant enzymes by curcumin and its analogues in human islets: implications in transplantation." in: **Pancreas**, Vol. 38, Issue 4, pp. 454-60, (2009) ([PubMed](#)).

Images



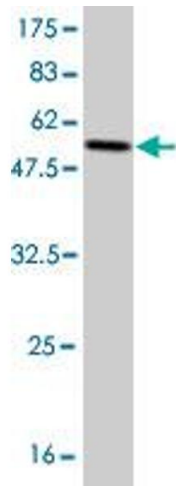
Western Blotting

Image 1. GCLM monoclonal antibody (M01), clone 2B8 Western Blot analysis of GCLM expression in HeLa .



ELISA

Image 2. Detection limit for recombinant GST tagged GCLM is approximately 1ng/ml as a capture antibody.



Western Blotting

Image 3. Western Blot detection against Immunogen (55.88 KDa).