



[Go to Product page](#)

Datasheet for ABIN516066
anti-GLO1 antibody (AA 1-98)

1 Image

Overview

Quantity:	100 µg
Target:	GLO1
Binding Specificity:	AA 1-98
Reactivity:	Human
Host:	Mouse
Clonality:	Monoclonal
Conjugate:	This GLO1 antibody is un-conjugated
Application:	ELISA

Product Details

Purpose:	Mouse monoclonal antibody raised against a partial recombinant GLO1.
Immunogen:	GLO1 (AAH11365.1, 1 a.a. ~ 98 a.a) partial recombinant protein with GST tag. MW of the GST tag alone is 26 KDa.
Sequence:	MAEPQPPSGG LTDEAALSYC SDADPSTKDF LLQQTMLRVK DPKKSLDFYT RVLGMTLIQK CDFPIMKFSL YFLAYEDKND IPKEKDEKIA WALSRKAT
Clone:	4C12
Isotype:	IgG2b
Cross-Reactivity:	Human
Characteristics:	Antibody Reactive Against Recombinant Protein.

Target Details

Target:	GL01
Alternative Name:	GL01 (GLO1 Products)
Background:	Full Gene Name: glyoxalase I Synonyms: GLOD1, GLYI
Gene ID:	2739

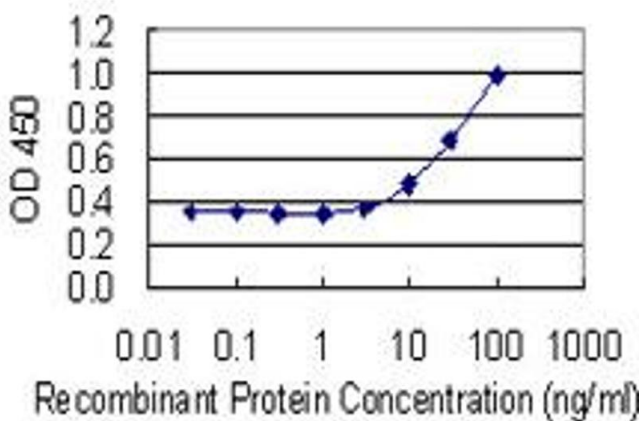
Application Details

Application Notes:	Optimal working dilution should be determined by the investigator.
Restrictions:	For Research Use only

Handling

Buffer:	In 1x PBS, pH 7.4
Handling Advice:	Aliquot to avoid repeated freezing and thawing.
Storage:	-20 °C
Storage Comment:	Store at -20°C or lower. Aliquot to avoid repeated freezing and thawing.

Images



ELISA

Image 1. Detection limit for recombinant GST tagged GLO1 is 1 ng/ml as a capture antibody.