



[Go to Product page](#)

Datasheet for ABIN516067

anti-GLRA1 antibody (AA 1-449)

1 Image

Overview

Quantity:	100 µg
Target:	GLRA1
Binding Specificity:	AA 1-449
Reactivity:	Human
Host:	Rabbit
Clonality:	Polyclonal
Conjugate:	This GLRA1 antibody is un-conjugated
Application:	Western Blotting (WB)

Product Details

Purpose:	Rabbit polyclonal antibody raised against a full-length human GLRA1 protein.
Immunogen:	GLRA1 (NP_000162.2, 1 a.a. ~ 449 a.a) full-length human protein.
Sequence:	MYSFNTLRLY LWETIVFFSL AASKEAEAAR SAPKPMSPSD FLDKLMGRTS GYDARIRPNF KGPPVNVSCN IFINSFGSIA ETTMDYRVNI FLRQQWNDPR LAYNEYPPDS LDLDPSMLDS IWKPDLEFFAN EKGAFHFEIT TDNKLLRISR NGNVLYSIRI TLTACPMDL KNFPMQVQTC IMQLESFGYT MNDLIFEWQE QGAVQVADGL TLPQFILKEE KDLRYCTKH Y NTGKFTCIEA RFHLERQMGY YLIQMYIPSL LIVILSWISF WINMDAAPAR VGLGITT VLT MTTQSSGSRA SLPKVSYVKA IDIWMAVCLL FVFSALLEYA AVNFVSRQHK ELLRFRKR RR HHKEDEAGEG RFNFSAYGMG PAQLQAKDGI SVKGANN SNT TNPPPAPSKS PEEMRKLFIQ RAKKIDKISR IGFPMAFLIF NMFYWIYKI VRREDVHNQ
Cross-Reactivity:	Human

Product Details

Characteristics: Antibody reactive against mammalian transfected lysate.

Target Details

Target: GLRA1

Alternative Name: GLRA1 ([GLRA1 Products](#))

Background: Full Gene Name: glycine receptor, alpha 1
Synonyms: MGC138878,MGC138879,STHE

Gene ID: 2741

Pathways: [Synaptic Membrane](#)

Application Details

Application Notes: Optimal working dilution should be determined by the investigator.

Restrictions: For Research Use only

Handling

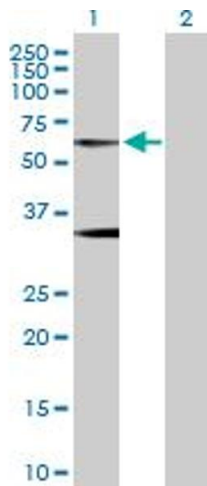
Buffer: In 1x PBS, pH 7.4

Handling Advice: Aliquot to avoid repeated freezing and thawing.

Storage: -20 °C

Storage Comment: Store at -20°C or lower. Aliquot to avoid repeated freezing and thawing.

Images



Western Blotting

Image 1. Western Blot analysis of GLRA1 expression in transfected 293T cell line by GLRA1 MaxPab polyclonal antibody.

Lane 1: GLRA1 transfected lysate(51.70 kDa).

Lane 2: Non-transfected lysate.