



[Go to Product page](#)

Datasheet for ABIN516068
anti-GLRA1 antibody (AA 121-220)

3 Images

Overview

| | |
|----------------------|--------------------------------------|
| Quantity: | 100 µg |
| Target: | GLRA1 |
| Binding Specificity: | AA 121-220 |
| Reactivity: | Human |
| Host: | Mouse |
| Clonality: | Monoclonal |
| Conjugate: | This GLRA1 antibody is un-conjugated |
| Application: | Western Blotting (WB), ELISA |

Product Details

| | |
|-------------------|--|
| Purpose: | Mouse monoclonal antibody raised against a partial recombinant GLRA1. |
| Immunogen: | GLRA1 (NP_000162, 121 a.a. ~ 220 a.a) partial recombinant protein with GST tag. MW of the GST tag alone is 26 KDa. |
| Sequence: | IWKPDFFAN EKGAFHFEIT TDNKLLRISR NGNVLYSIRI TLTACPM DL KNFPMDVQTC IMQLESFGYT MNDLIFEWQE QGAVQVADGL TLPQFILKEE |
| Clone: | 2E6 |
| Isotype: | IgG2a |
| Cross-Reactivity: | Human |
| Characteristics: | Antibody Reactive Against Recombinant Protein. |

Target Details

| | |
|-------------------|---|
| Target: | GLRA1 |
| Alternative Name: | GLRA1 (GLRA1 Products) |
| Background: | Full Gene Name: glycine receptor, alpha 1 Synonyms: MGC138878,MGC138879,STHE |
| Gene ID: | 2741 |
| NCBI Accession: | NM_000171 |
| Pathways: | Synaptic Membrane |

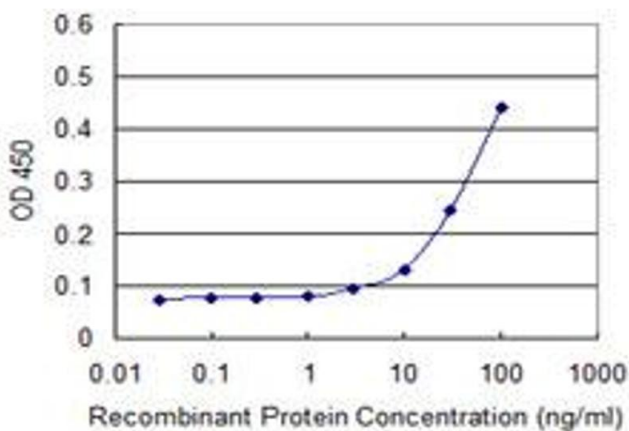
Application Details

| | |
|--------------------|--|
| Application Notes: | Optimal working dilution should be determined by the investigator. |
| Restrictions: | For Research Use only |

Handling

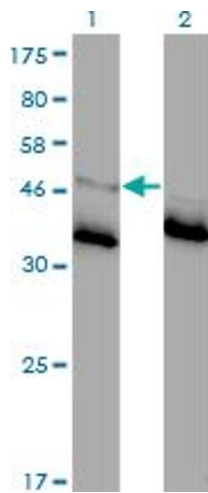
| | |
|------------------|--|
| Buffer: | In 1x PBS, pH 7.4 |
| Handling Advice: | Aliquot to avoid repeated freezing and thawing. |
| Storage: | -20 °C |
| Storage Comment: | Store at -20°C or lower. Aliquot to avoid repeated freezing and thawing. |

Images



ELISA

Image 1. Detection limit for recombinant GST tagged GLRA1 is approximately 3ng/ml as a capture antibody.

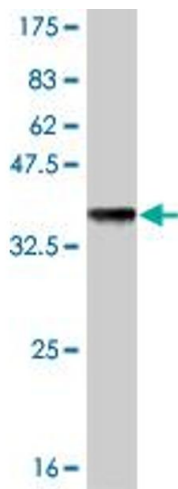


Western Blotting

Image 2. Western Blot analysis of GLRA1 expression in transfected 293T cell line by GLRA1 monoclonal antibody (M01), clone 2E6.

Lane 1: GLRA1 transfected lysate(51.7 kDa).

Lane 2: Non-transfected lysate.



Western Blotting

Image 3. Western Blot detection against Immunogen (36.74 kDa).