

Datasheet for ABIN516111  
**anti-GNG7 antibody (AA 1-68)**[Go to Product page](#)

## 2 Images

## Overview

Quantity:	100 µg
Target:	GNG7
Binding Specificity:	AA 1-68
Reactivity:	Human
Host:	Rabbit
Clonality:	Polyclonal
Conjugate:	This GNG7 antibody is un-conjugated
Application:	Western Blotting (WB), Proximity Ligation Assay (PLA)

## Product Details

Purpose:	Rabbit polyclonal antibody raised against a full-length human GNG7 protein.
Immunogen:	GNG7 (NP_443079.1, 1 a.a. ~ 68 a.a) full-length human protein.
Sequence:	MSATNNIAQA RKLVEQLRIE AGIERIKVSK AASDLMSYCE QHARNDPLL VGPASENPFK DKKPCII L
Cross-Reactivity:	Human
Characteristics:	Antibody reactive against mammalian transfected lysate.

## Target Details

Target:	GNG7
Alternative Name:	GNG7 ( <a href="#">GNG7 Products</a> )

## Target Details

Background:	Full Gene Name: guanine nucleotide binding protein (G protein), gamma 7 Synonyms: FLJ00058
Gene ID:	2788
NCBI Accession:	<a href="#">NM_052847</a>

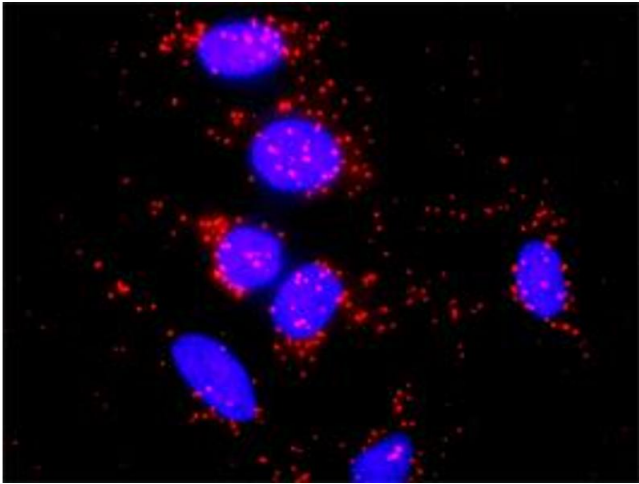
## Application Details

Application Notes:	Optimal working dilution should be determined by the investigator.
Restrictions:	For Research Use only

## Handling

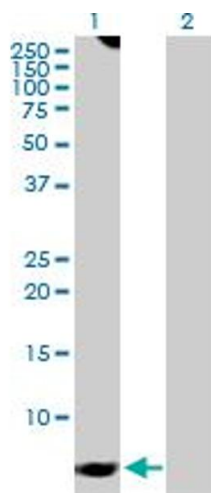
Buffer:	In 1x PBS, pH 7.4
Handling Advice:	Aliquot to avoid repeated freezing and thawing.
Storage:	-20 °C
Storage Comment:	Store at -20°C or lower. Aliquot to avoid repeated freezing and thawing.

## Images



### Proximity Ligation Assay

**Image 1.** Proximity Ligation Analysis of protein-protein interactions between GNG7 and GNB5. HeLa cells were stained with anti-GNG7 rabbit purified polyclonal 1:1200 and anti-GNB5 mouse monoclonal antibody 1:50. Each red dot represents the detection of protein-protein interaction complex, and nuclei were counterstained with DAPI (blue).



Western Blotting

**Image 2.** Western Blot analysis of GNG7 expression in transfected 293T cell line by GNG7 MaxPab polyclonal antibody.

Lane 1: GNG7 transfected lysate(7.50 KDa).

Lane 2: Non-transfected lysate.