



## Datasheet for ABIN516125 anti-GNS antibody (AA 1-552)



[Go to Product page](#)

### 1 Image

#### Overview

Quantity:	50 µg
Target:	GNS
Binding Specificity:	AA 1-552
Reactivity:	Human
Host:	Mouse
Clonality:	Polyclonal
Conjugate:	This GNS antibody is un-conjugated
Application:	Western Blotting (WB)

#### Product Details

Purpose:	Mouse polyclonal antibody raised against a full-length human GNS protein.
Immunogen:	GNS (NP_002067.1, 1 a.a. ~ 552 a.a) full-length human protein.
Sequence:	<p>MRLPLAPGR LRRGSPRHLP SCSPALLLLV LGGCLGVFGV AAGTRRPNVV LLLTDDQDEV LGGMTPLKKT KALIGEMGMT FSSAYVPSAL CCPSRASILT GKYPHNHHVV NNTLEGNCSS KSWQKIQEPN TFPAILRSMC GYQTF FAGKY LNEYGAPDAG GLEHVPLGWS WYALEKNSK YYNYTLSING KARKHGENYS VDYLTDVLAN VSLDFLDYKS NFEPFFMMIA TPAPHSPWTA APQYQKAFQN VFAPRNKNFN IHGTNKHWHLI RQAKTPMTNS SIQFLDNAFR KRWQTLLSVD DLVEKLVKRL EFTGELNNTY IFYTS DNGYH TGQFSLPIDK RQLYEFDIKV PLLVRGPGIK PNQTSKMLVA NIDLGPTILD IAGYDLNKTQ MDGMSLLPIL RGASNLTWRS DVLVEYQGE RNVTDP TCPS LSPGVSQCFC DCVCEDAYNN TYACVRTMSA LWNLQYCEFD DQEVFVEVYN LTADPDQITN IAKTIDPELL GKMNRYRLMML QSCSGPTCRT PGVFDPGYRF DPRLMFSNRG SVRTRRFSKH LL</p>

## Product Details

---

Cross-Reactivity:	Human
Characteristics:	Antibody reactive against mammalian transfected lysate.

## Target Details

---

Target:	GNS
Alternative Name:	GNS ( <a href="#">GNS Products</a> )
Background:	Full Gene Name: glucosamine (N-acetyl)-6-sulfatase Synonyms: G6S,MGC21274
Gene ID:	2799
NCBI Accession:	<a href="#">NM_002076</a>
Pathways:	<a href="#">Glycosaminoglycan Metabolic Process</a>

## Application Details

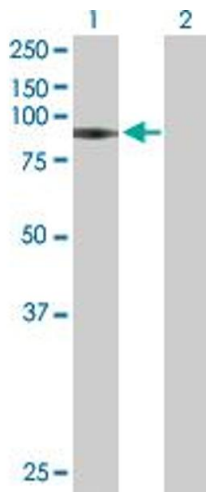
---

Application Notes:	Optimal working dilution should be determined by the investigator.
Restrictions:	For Research Use only

## Handling

---

Buffer:	In 1x PBS, pH 7.4
Handling Advice:	Aliquot to avoid repeated freezing and thawing.
Storage:	-20 °C
Storage Comment:	Store at -20°C or lower. Aliquot to avoid repeated freezing and thawing.



### Western Blotting

**Image 1.** Western Blot analysis of GNS expression in transfected 293T cell line by GNS MaxPab polyclonal antibody.

Lane1:GNS transfected lysate(60.72 KDa).

Lane2:Non-transfected lysate.