

Datasheet for ABIN516152  
**anti-G Protein-Coupled Receptor 1 antibody (AA 1-355)**



[Go to Product page](#)

1 Image

1 Publication

Overview

Quantity:	50 µg
Target:	G Protein-Coupled Receptor 1 (GPR1)
Binding Specificity:	AA 1-355
Reactivity:	Human
Host:	Mouse
Clonality:	Polyclonal
Conjugate:	This G Protein-Coupled Receptor 1 antibody is un-conjugated
Application:	Western Blotting (WB)

Product Details

Purpose:	Mouse polyclonal antibody raised against a full-length human GPR1 protein.
Immunogen:	GPR1 (NP_005270.2, 1 a.a. ~ 355 a.a) full-length human protein.
Sequence:	MEDLEETLFE EFENYSYDLD YYSLESLEE KVQLGVVHWV SLVLYCLAFV LGIPGNAIVI WFTGFKWKKT VTTLWFLNLA IADFIFLLFL PLYISYVAMN FHWPFGIWLC KANSFTAQLN MFASVFFLTV ISLDHYIHLI HPVLSHRHRT LKNSLIVIF IWLLASLIGG PALYFRDVE FNNHTLCYNN FQKHDPDLTL IRHHVLTWVK FIIGYLFPLL TMSICYLCLI FKVKKRSILI SSRHFWTILV VVAVFVVCWT PYHLFSIWEL TIHNSYSHH VMQAGIPLST GLAFLNSCLN PILYVLISKK FQARFRSSVA EILKYTLWEV SCSGTVSEQL RNSETKNLCL LETAQ
Cross-Reactivity:	Human
Characteristics:	Antibody reactive against mammalian transfected lysate.

## Target Details

---

Target:	G Protein-Coupled Receptor 1 (GPR1)
Alternative Name:	GPR1 ( <a href="#">GPR1 Products</a> )
Background:	Full Gene Name: G protein-coupled receptor 1 Synonyms:
Gene ID:	2825
NCBI Accession:	<a href="#">NM_005279</a>
Pathways:	<a href="#">Steroid Hormone Mediated Signaling Pathway</a> , <a href="#">Regulation of Carbohydrate Metabolic Process</a>

## Application Details

---

Application Notes:	Optimal working dilution should be determined by the investigator.
Restrictions:	For Research Use only

## Handling

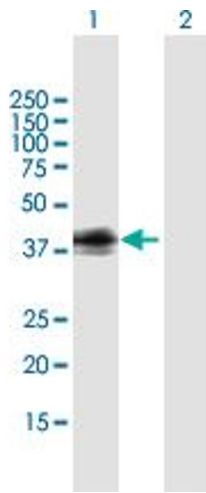
---

Buffer:	In 1x PBS, pH 7.4
Handling Advice:	Aliquot to avoid repeated freezing and thawing.
Storage:	-20 °C
Storage Comment:	Store at -20°C or lower. Aliquot to avoid repeated freezing and thawing.

## Publications

---

Product cited in:	Schmitt, Gallistl, Schüler-Toprak, Fritsch, Buechler, Ortman, Treeck: "Anti-Tumoral Effect of Chemerin on Ovarian Cancer Cell Lines Mediated by Activation of Interferon Alpha Response." in: <b>Cancers</b> , Vol. 14, Issue 17, (2022) ( <a href="#">PubMed</a> ).
-------------------	--



### Western Blotting

**Image 1.** Western Blot analysis of GPR1 expression in transfected 293T cell line by GPR1 MaxPab polyclonal antibody.

Lane 1: GPR1 transfected lysate(41.40 KDa).

Lane 2: Non-transfected lysate.