

Datasheet for ABIN516184  
**anti-GRF2 antibody (AA 1-1095)**



[Go to Product page](#)

2 Images

Overview

Quantity:	50 µg
Target:	GRF2 (RAPGEF1)
Binding Specificity:	AA 1-1095
Reactivity:	Human
Host:	Mouse
Clonality:	Polyclonal
Conjugate:	This GRF2 antibody is un-conjugated
Application:	Western Blotting (WB), Immunofluorescence (IF)

Product Details

Purpose:	Mouse polyclonal antibody raised against a full-length human RAPGEF1 protein.
Immunogen:	RAPGEF1 (NP_941372.1, 1 a.a. ~ 1095 a.a) full-length human protein.
Sequence:	MGNAIEKQKP LKRSHLYPWK QDSQRSHLSS FTMKLMDFKH SPKIKRTPSK KGKPAEVSVK IPEKPVNKEA TDRFLPEGYP LPLDLEQQAV EFMSTSAVAS RSQRQKNLSW LEEKEKEVVS ALRYFKTIVD KMAIDKKVLE MLPGSASKVL EAILPLVQND PRIQHSSALS SCYSRVYQSL ANLIRWSDQV MLEGVNSEDK EMVTTVKGVI KAVLDGVKEL VRLTIEKQGR PSPTSPVKPS SPASKPDGPA ELPLTDREVE ILNKTTGMSQ STELLPDATD EEVAPPKPL PGIRVVDNSP PPALPPKRRQ SAPSPTRVAV VAPMSRATSG SSLPVGINRQ DFDVDCYAQR RLSGGSHSYG GESPRLSPCS SIGKLSKSDE QLSSLDLDRDSG QCSRNTSCET LDHYDPDYEF LQQDLSNADQ IPQQTAWNLS PLPESLGESG SPFLGPPFQL PLGGHPQPDG PLAPGQQTDT PPALPEKKRR SAASQTADGS GCRVSYERHP SQYDNISGED LQSTAPIPSV PYAPFAAILP FQHGGSSAPV EFVGDFTAPE STGDPEKPPP LPEKKNKHMAL AYMQLLEDYS EPQPSMFYQT PQNEHIYQQK

## Product Details

---

NKLLMEVYGF SDSFSGVDSV QELAPPPALP PKQRQLEPPA GKDGHPDPS AVSGVPGKDS  
RDGSERAPKS PDALESAQSE EEVDELSLID HNEIMSRLTL KQEGDDGPDV RGGSGDILLV  
HATETDRKDL VLYCEAFLTT YRTFISPEEL IKKLQYRYEK FSPFADTFKK RVSKNITFFVL  
VRVDELCLV ELTEEILKLL MELVFRLVCN GELSLARVLR KNILDKVDQK KLLRCATSSQ  
PLAARGVAAR PGTLHDFHSH EIAEQLTLLD AELFYKIEIP EVLLWAKEQN EEKSPNLTQF  
TEHFNNMSYW VRSIIMLQEK AQDRERLLLK FIKIMKHLRK LNNFNLSYLAI LSALDSAPIR  
RLEWQKQTSE GLAEYCTLID SSSSFRAYRA ALSEVEPPCI PYLGLILQDL TFWHLGNPDY  
IDGKVNFSKR WQQFNILDSM RCFQQAHYDM RRNDIINFF NDFSDHLAEE ALWELSLKIK  
PRNITRRKTD REEKT

Cross-Reactivity: Human

Characteristics: Antibody reactive against mammalian transfected lysate.

## Target Details

---

Target: GRF2 (RAPGEF1)

Alternative Name: RAPGEF1 ([RAPGEF1 Products](#))

Background: Full Gene Name: Rap guanine nucleotide exchange factor (GEF) 1  
Synonyms: C3G,DKFZp781P1719,GRF2

Gene ID: 2889

NCBI Accession: [NM\\_198679](#)

Pathways: [Interferon-gamma Pathway](#), [Neurotrophin Signaling Pathway](#), [Platelet-derived growth Factor Receptor Signaling](#), [Signaling of Hepatocyte Growth Factor Receptor](#)

## Application Details

---

Application Notes: Optimal working dilution should be determined by the investigator.

Restrictions: For Research Use only

## Handling

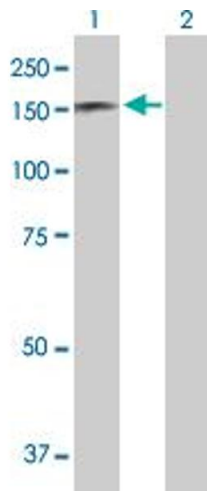
---

Buffer: In 1x PBS, pH 7.4

Handling Advice: Aliquot to avoid repeated freezing and thawing.

Storage: -20 °C

Storage Comment: Store at -20°C or lower. Aliquot to avoid repeated freezing and thawing.

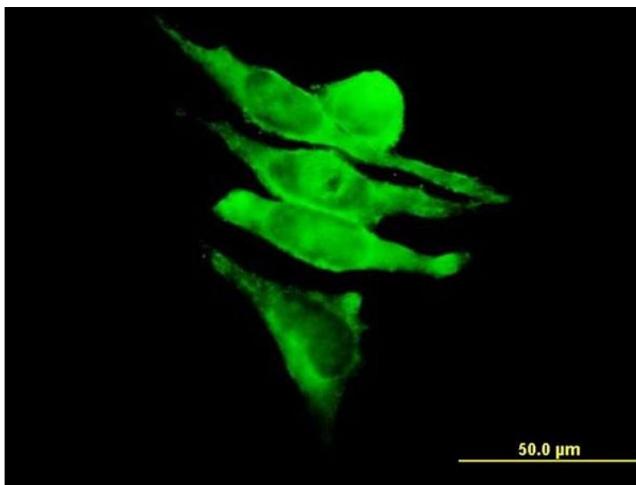


### Western Blotting

**Image 1.** Western Blot analysis of RAPGEF1 expression in transfected 293T cell line by RAPGEF1 MaxPab polyclonal antibody.

Lane 1: RAPGEF1 transfected lysate(120.45 KDa).

Lane 2: Non-transfected lysate.



### Immunofluorescence

**Image 2.** Immunofluorescence of purified MaxPab antibody to RAPGEF1 on HeLa cell. [antibody concentration 10 ug/ml]