

Datasheet for ABIN516196
anti-GRIN2B antibody (AA 127-236)



[Go to Product page](#)

3 Images

Overview

Quantity:	100 µg
Target:	GRIN2B
Binding Specificity:	AA 127-236
Reactivity:	Human
Host:	Mouse
Clonality:	Monoclonal
Conjugate:	This GRIN2B antibody is un-conjugated
Application:	Western Blotting (WB), ELISA, Proximity Ligation Assay (PLA)

Product Details

Purpose:	Mouse monoclonal antibody raised against a partial recombinant GRIN2B.
Immunogen:	GRIN2B (NP_000825, 127 a.a. ~ 236 a.a) partial recombinant protein with GST tag. MW of the GST tag alone is 26 KDa.
Sequence:	HGGSSMIMAD KDESSMFFQF GPSIEQQASV MLNIMEEYDW YIFSIVTTYF PGYQDFVNKI RSTIENSFVG WELEEVLILLD MSLDDGDSKI QNQLKKLQSP IILLYCTKEE
Clone:	2G5
Isotype:	IgG2a
Cross-Reactivity:	Human
Characteristics:	Antibody Reactive Against Recombinant Protein.

Target Details

Target:	GRIN2B
Alternative Name:	GRIN2B (GRIN2B Products)
Background:	Full Gene Name: glutamate receptor, ionotropic, N-methyl D-aspartate 2B Synonyms: MGC142178,MGC142180,NMDAR2B,NR2B,hNR3
Gene ID:	2904
NCBI Accession:	NM_000834
Pathways:	Response to Growth Hormone Stimulus , Synaptic Membrane , Feeding Behaviour , Regulation of long-term Neuronal Synaptic Plasticity

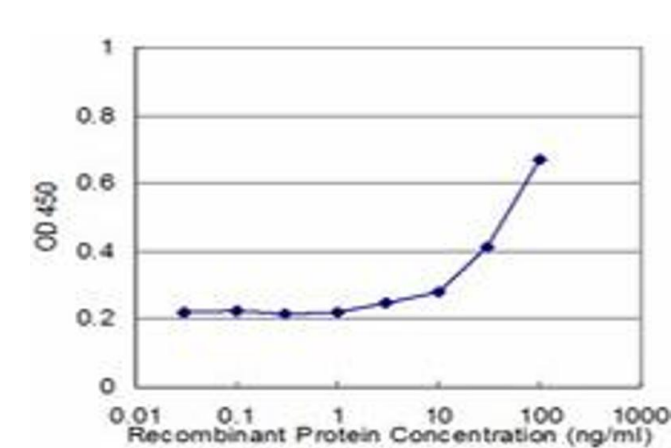
Application Details

Application Notes:	Optimal working dilution should be determined by the investigator.
Restrictions:	For Research Use only

Handling

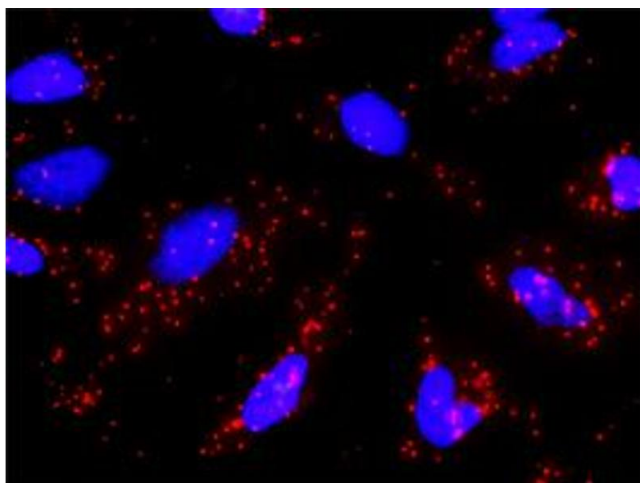
Buffer:	In 1x PBS, pH 7.4
Handling Advice:	Aliquot to avoid repeated freezing and thawing.
Storage:	-20 °C
Storage Comment:	Store at -20°C or lower. Aliquot to avoid repeated freezing and thawing.

Images



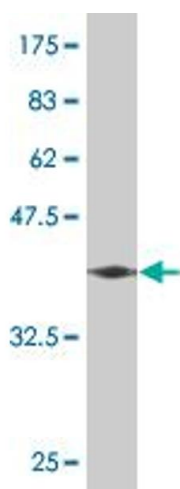
ELISA

Image 1. Detection limit for recombinant GST tagged GRIN2B is approximately 3ng/ml as a capture antibody.



Proximity Ligation Assay

Image 2. Proximity Ligation Analysis of protein-protein interactions between CAPN1 and GRIN2B. HeLa cells were stained with anti-CAPN1 rabbit purified polyclonal 1:1200 and anti-GRIN2B mouse monoclonal antibody 1:50. Each red dot represents the detection of protein-protein interaction complex, and nuclei were counterstained with DAPI (blue).



Western Blotting

Image 3. Western Blot detection against Immunogen (37.84 kDa).