



[Go to Product page](#)

Datasheet for ABIN516204  
**anti-GRM2 antibody (AA 414-506)**

1 Image

Overview

|                      |                                     |
|----------------------|-------------------------------------|
| Quantity:            | 100 µg                              |
| Target:              | GRM2                                |
| Binding Specificity: | AA 414-506                          |
| Reactivity:          | Human                               |
| Host:                | Mouse                               |
| Clonality:           | Monoclonal                          |
| Conjugate:           | This GRM2 antibody is un-conjugated |
| Application:         | ELISA                               |

Product Details

|                   |   |
|-------------------|---|
| Purpose:          | Mouse monoclonal antibody raised against a partial recombinant GRM2.  |
| Immunogen:        | GRM2 (NP_000830, 414 a.a. ~ 506 a.a) partial recombinant protein with GST tag. MW of the GST tag alone is 26 KDa. |
| Sequence:         | NGRRLYKDFV LNVKFDAPFR PADTHNEVRF DRFGDGIGRY NIFTYLRAGS GRYRYQKVGY<br>WAEGTLTDTS LIPWASPSAG PLAASRCSEP CLQ         |
| Clone:            | 3H7   |
| Isotype:          | IgG2a   |
| Cross-Reactivity: | Human   |
| Characteristics:  | Antibody Reactive Against Recombinant Protein.  |

## Target Details

|                   |   |
|-------------------|---|
| Target:           | GRM2  |
| Alternative Name: | GRM2 ( <a href="#">GRM2 Products</a> )  |
| Background:       | Full Gene Name: glutamate receptor, metabotropic 2<br>Synonyms: GLUR2,GPRC1B,MGLUR2,mGlu2 |
| Gene ID:          | 2912  |
| NCBI Accession:   | <a href="#">NM_000839</a>   |
| Pathways:         | <a href="#">cAMP Metabolic Process</a> , <a href="#">Dicarboxylic Acid Transport</a>      |

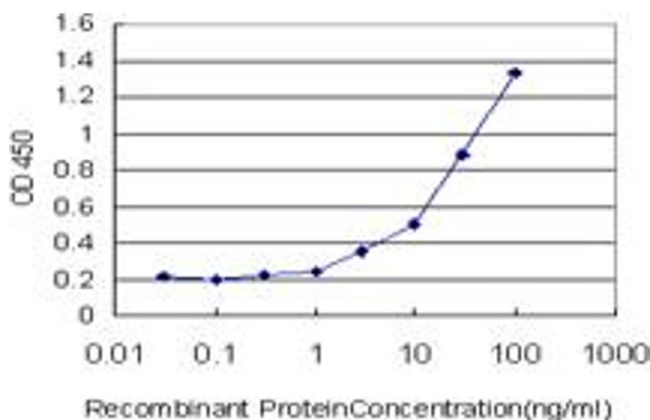
## Application Details

|                    |  |
|--------------------|--|
| Application Notes: | Optimal working dilution should be determined by the investigator. |
| Restrictions:      | For Research Use only  |

## Handling

|                  |  |
|------------------|--|
| Buffer:          | In 1x PBS, pH 7.4  |
| Handling Advice: | Aliquot to avoid repeated freezing and thawing.                          |
| Storage:         | -20 °C   |
| Storage Comment: | Store at -20°C or lower. Aliquot to avoid repeated freezing and thawing. |

## Images



### ELISA

**Image 1.** Detection limit for recombinant GST tagged GRM2 is approximately 0.3ng/ml as a capture antibody.