

Datasheet for ABIN516205

anti-Metabotropic Glutamate Receptor 5 antibody (AA 419-518)[Go to Product page](#)**3** Images

Overview

Quantity:	100 µg
Target:	Metabotropic Glutamate Receptor 5 (GRM5)
Binding Specificity:	AA 419-518
Reactivity:	Human
Host:	Mouse
Clonality:	Monoclonal
Conjugate:	This Metabotropic Glutamate Receptor 5 antibody is un-conjugated
Application:	Western Blotting (WB), ELISA, Proximity Ligation Assay (PLA)

Product Details

Purpose:	Mouse monoclonal antibody raised against a partial recombinant GRM5.
Immunogen:	GRM5 (NP_000833, 419 a.a. ~ 518 a.a) partial recombinant protein with GST tag. MW of the GST tag alone is 26 KDa.
Sequence:	CPGYAGLCDA MKPIDGRKLL ESLMKTNFTG VSGDTILFDE NGDSPGRYEI MNFKEMGKDY FDYINVGSWD NGELKMDDDE VWSKKSNIIR SVCSEPCEKG
Clone:	1B3
Isotype:	IgG2a
Cross-Reactivity:	Human
Characteristics:	Antibody Reactive Against Recombinant Protein.

Target Details

Target:	Metabotropic Glutamate Receptor 5 (GRM5)
Alternative Name:	GRM5 (GRM5 Products)
Background:	Full Gene Name: glutamate receptor, metabotropic 5 Synonyms: GPRC1E,MGLUR5,mGlu5
Gene ID:	2915
NCBI Accession:	NM_000842
Pathways:	Regulation of G-Protein Coupled Receptor Protein Signaling , Regulation of long-term Neuronal Synaptic Plasticity

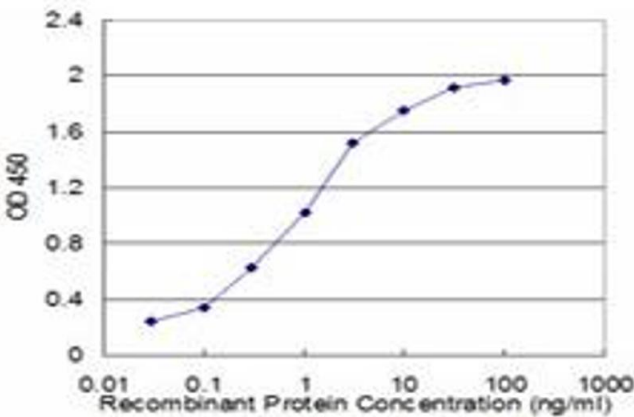
Application Details

Application Notes:	Optimal working dilution should be determined by the investigator.
Restrictions:	For Research Use only

Handling

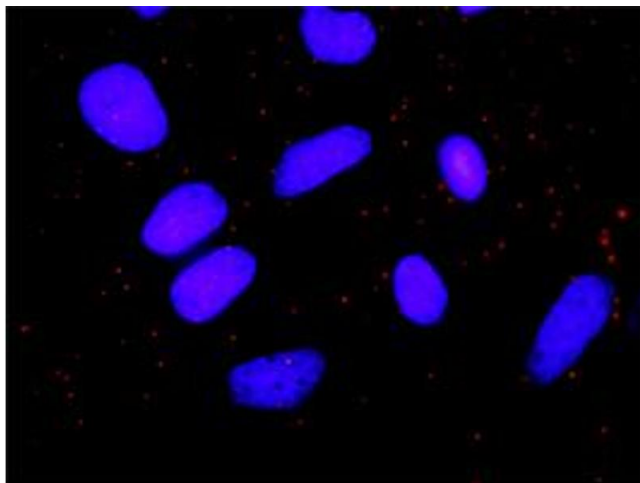
Buffer:	In 1x PBS, pH 7.4
Handling Advice:	Aliquot to avoid repeated freezing and thawing.
Storage:	-20 °C
Storage Comment:	Store at -20°C or lower. Aliquot to avoid repeated freezing and thawing.

Images



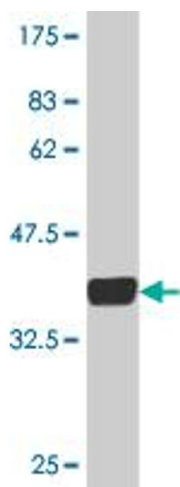
ELISA

Image 1. Detection limit for recombinant GST tagged GRM5 is approximately 0.03ng/ml as a capture antibody.



Proximity Ligation Assay

Image 2. Proximity Ligation Analysis of protein-protein interactions between PRKCD and GRM5. HeLa cells were stained with anti-PRKCD rabbit purified polyclonal 1:1200 and anti-GRM5 mouse monoclonal antibody 1:50. Each red dot represents the detection of protein-protein interaction complex, and nuclei were counterstained with DAPI (blue).



Western Blotting

Image 3. Western Blot detection against Immunogen (36.74 kDa).