

Datasheet for ABIN516209
anti-CXCL1 antibody (AA 1-107)



[Go to Product page](#)

1 Image

Overview

Quantity:	100 µg
Target:	CXCL1
Binding Specificity:	AA 1-107
Reactivity:	Human
Host:	Mouse
Clonality:	Monoclonal
Conjugate:	This CXCL1 antibody is un-conjugated
Application:	ELISA

Product Details

Purpose:	Mouse monoclonal antibody raised against a full-length recombinant CXCL1.
Immunogen:	CXCL1 (AAH11976, 1 a.a. ~ 107 a.a) full-length recombinant protein with GST tag. MW of the GST tag alone is 26 KDa.
Sequence:	MARAALSAAP SNPRLLRVAL LLLLLVAAGR RAAGASVATE LRCQCLQLTQ GIHPKNIQSV NVKSPGPHCA QTEVIATLKN GRKACLNPAS PIVKKIIEKM LNSDKSN
Clone:	2D7
Isotype:	IgG2a
Cross-Reactivity:	Human
Characteristics:	Antibody Reactive Against Recombinant Protein.

Target Details

Target:	CXCL1
Alternative Name:	CXCL1 (CXCL1 Products)
Background:	Full Gene Name: chemokine (C-X-C motif) ligand 1 (melanoma growth stimulating activity, alpha) Synonyms: FSP,GRO1,GROa,MGSA,MGSA-a,NAP-3,SCYB1
Gene ID:	2919
Pathways:	Autophagy

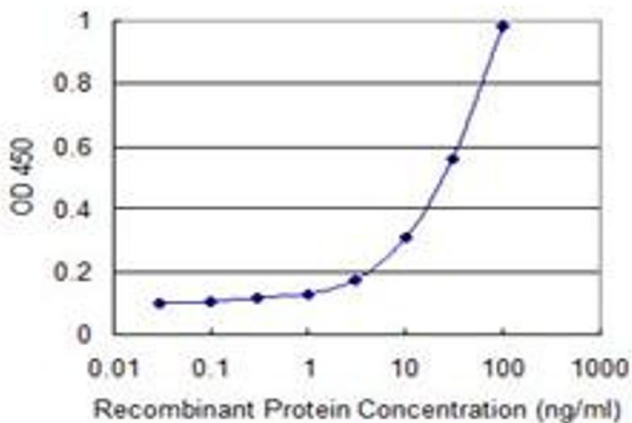
Application Details

Application Notes:	Optimal working dilution should be determined by the investigator.
Restrictions:	For Research Use only

Handling

Buffer:	In 1x PBS, pH 7.4
Handling Advice:	Aliquot to avoid repeated freezing and thawing.
Storage:	-20 °C
Storage Comment:	Store at -20°C or lower. Aliquot to avoid repeated freezing and thawing.

Images



ELISA

Image 1. Detection limit for recombinant GST tagged CXCL1 is 1 ng/ml as a capture antibody.