

Datasheet for ABIN516331

anti-Histone H1.1 antibody (AA 1-215)



[Go to Product page](#)

1 Image

Overview

Quantity:	100 µg
Target:	Histone H1.1 (HIST1H1A)
Binding Specificity:	AA 1-215
Reactivity:	Human
Host:	Rabbit
Clonality:	Polyclonal
Conjugate:	This Histone H1.1 antibody is un-conjugated
Application:	Western Blotting (WB)

Product Details

Purpose:	Rabbit polyclonal antibody raised against a full-length human HIST1H1A protein.
Immunogen:	HIST1H1A (NP_005316.1, 1 a.a. ~ 215 a.a) full-length human protein.
Sequence:	MSETVPPAPA ASAAPEKPLA GKKAKKPAKA AAASKKKPAG PSVSELIVQA ASSSKERGGV SLAALKKALA AAGYDVEKNN SRIKLGIKSL VSKGTLVQTK GTGASGSFKL NKKASSVETK PGASKVATKT KATGASKKLLK KATGASKKSV KTPKKAKKPA ATRKSSKNPK KPKTVKPKKV AKSPAKAKAV KPKAARVT KPKTAKPKKA APKKK
Cross-Reactivity:	Human
Characteristics:	Antibody reactive against mammalian transfected lysate.

Target Details

Target:	Histone H1.1 (HIST1H1A)
---------	-------------------------

Target Details

Alternative Name:	HIST1H1A (HIST1H1A Products)
Background:	Full Gene Name: histone cluster 1, H1a Synonyms: H1.1,H1F1,HIST1,MGC126642,MGC138345
Gene ID:	3024
NCBI Accession:	NM_005325

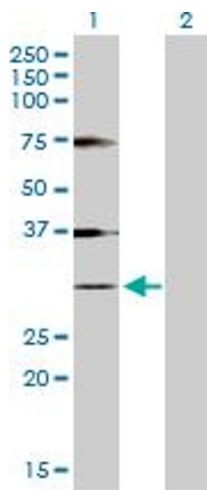
Application Details

Application Notes:	Optimal working dilution should be determined by the investigator.
Restrictions:	For Research Use only

Handling

Buffer:	In 1x PBS, pH 7.4
Handling Advice:	Aliquot to avoid repeated freezing and thawing.
Storage:	-20 °C
Storage Comment:	Store at -20°C or lower. Aliquot to avoid repeated freezing and thawing.

Images



Western Blotting

Image 1. Western Blot analysis of HIST1H1A expression in transfected 293T cell line by HIST1H1A MaxPab polyclonal antibody.

Lane 1: HIST1H1A transfected lysate(21.80 KDa).

Lane 2: Non-transfected lysate.