

Datasheet for ABIN516397
anti-HELLS antibody (AA 1-838)



[Go to Product page](#)

2 Images

Overview

Quantity:	50 µg
Target:	HELLS
Binding Specificity:	AA 1-838
Reactivity:	Human
Host:	Mouse
Clonality:	Polyclonal
Conjugate:	This HELLS antibody is un-conjugated
Application:	Western Blotting (WB), Immunofluorescence (IF)

Product Details

Purpose:	Mouse polyclonal antibody raised against a full-length human HELLS protein.
Immunogen:	HELLS (NP_060533.2, 1 a.a. ~ 838 a.a) full-length human protein.
Sequence:	MPAERPAGSG GSEAPAMVEQ LDTAVITPAM LEEEEQLEAA GLERERKMLE KARMSWDRES TEIRYRRLQH LLEKSNIYSK FLLTKMEQQQ LEEQKKKEKL ERKKESLKVK KGKNSIDASE EKPVMRKKRG REDESYNISE VMSKEEILSV AKKNKKENED ENSSSTNLVCV EDLQKNKDSN SIIKDRLSET VRQNTKFFFD PVRKCNQGQPV PFQPKHFTG GVMRWYQVEG MEWLRMLWEN GINGILADEM GLGKTVQCIA TIALMIQRGV PGPFLVCGPL STLPNWMAEF KRFTPDIPMT LYHGTQEERQ KLVARNIYKRK GTLQIHPVVI TSFEIAMRDR NALQHCYWKY LIVDEGHRIK NMKCLIREL KRFNADNKLL LTGTPLQNNL SELWSLLNFL LPDVFDDLKS FESWFDITSL SETAEDIIAK EREQNVLHML HQILTPFLLR RLKSDVALEV PPKREVVVYA PLSKKQEIFY TAIVNRTIAN MFGSSEKETI ELSPTGRPKR RTRKSINYSK IDDFPNELEK LISQIQPEVD RERAVVEVNI PVSEVNLKL QNIMMLLRKC CNHPYLIEYP IDPVTQEFKI DEELVTNSGK

Product Details

FLILDRMLPE LKKRGHKVLL FSQMTSMLDI LMDYCHLRDF NFSRLDGSMS YSEREKNMHS
FNTDPEVFIF LVSTRAGGLG INLTAADTVI IYDSDWNPQS DLQAQDRCHR IGQTKPVVVY
RLVTANTIDQ KIVERAAAKR KLEKLIHKH HFKGGQSGLN LSKNFLDPKE LMELLKSRDY
EREIKGSREK VISDKDLELL LDRSDLIDQM NASGPIKEKM GIFKILENSE DSSPECLF

Cross-Reactivity: Human

Characteristics: Antibody reactive against mammalian transfected lysate.

Target Details

Target: HELLS

Alternative Name: HELLS ([HELLS Products](#))

Background: Full Gene Name: helicase, lymphoid-specific
Synonyms: FLJ10339,LSH,Nbla10143,PASG,SMARCA6

Gene ID: 3070

NCBI Accession: [NM_018063](#)

Pathways: [Chromatin Binding](#)

Application Details

Application Notes: Optimal working dilution should be determined by the investigator.

Restrictions: For Research Use only

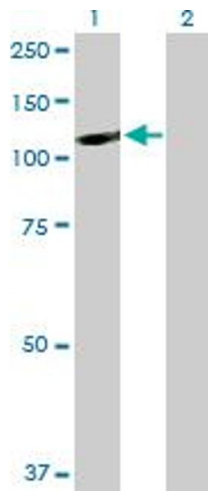
Handling

Buffer: In 1x PBS, pH 7.4

Handling Advice: Aliquot to avoid repeated freezing and thawing.

Storage: -20 °C

Storage Comment: Store at -20°C or lower. Aliquot to avoid repeated freezing and thawing.

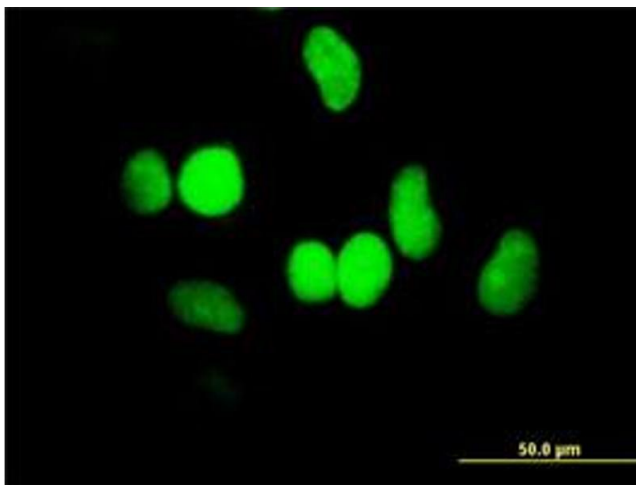


Western Blotting

Image 1. Western Blot analysis of HELLS expression in transfected 293T cell line by HELLS MaxPab polyclonal antibody.

Lane 1: HELLS transfected lysate(92.18 KDa).

Lane 2: Non-transfected lysate.



Immunofluorescence

Image 2. Immunofluorescence of purified MaxPab antibody to HELLS on HeLa cell. (antibody concentration 10 μg/mL)