



Datasheet for ABIN516406
anti-HFE antibody (AA 1-348)



[Go to Product page](#)

1 Image

Overview

Quantity:	100 µg
Target:	HFE
Binding Specificity:	AA 1-348
Reactivity:	Human
Host:	Rabbit
Clonality:	Polyclonal
Conjugate:	This HFE antibody is un-conjugated
Application:	Western Blotting (WB)

Product Details

Purpose:	Rabbit polyclonal antibody raised against a full-length human HFE protein.
Immunogen:	HFE (NP_000401.1, 1 a.a. ~ 348 a.a) full-length human protein.
Sequence:	MGPRARPALL LLMLLQTAVL QGRLLRSHSL HYLFMGASEQ DLGLSLFEAL GYVDDQLFVF YDHESRRVEP RTPWVSSRIS SQMWLQLSQS LKGWDHMFTV DFWTIMENHN HSKESHTLQV ILGCEMQEDN STEGYWKYGY DGQDHLEFCP DTLDWRAAEP RAWPTKLEWE RHKIRARQNR AYLERDCPAQ LQQLLELGRG VLDQQVPPLV KVTHHVTSSV TTLRCRALNY YPQNITMKWL KDKQPMDAKE FEPKDVLPNG DGTYQGWITL AVPPGEEQRY TCQVEHPGLD QPLIVIWEPS PSGTLVIGVI SGIAVFVVIL FIGILFIILR KRQGSRGAMG HYVLAERE
Cross-Reactivity:	Human
Characteristics:	Antibody reactive against mammalian transfected lysate.

Target Details

Target:	HFE
Alternative Name:	HFE (HFE Products)
Background:	Full Gene Name: hemochromatosis Synonyms: HFE1,HH,HLA-H,MGC103790,dJ221C16.10.1
Gene ID:	3077
NCBI Accession:	NM_000410
Pathways:	Transition Metal Ion Homeostasis , Regulation of Leukocyte Mediated Immunity , Positive Regulation of Immune Effector Process

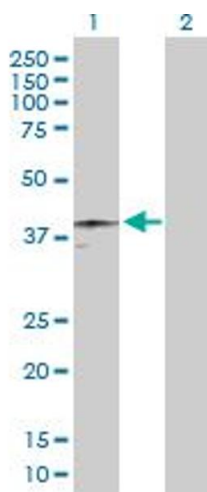
Application Details

Application Notes:	Optimal working dilution should be determined by the investigator.
Restrictions:	For Research Use only

Handling

Buffer:	In 1x PBS, pH 7.4
Handling Advice:	Aliquot to avoid repeated freezing and thawing.
Storage:	-20 °C
Storage Comment:	Store at -20°C or lower. Aliquot to avoid repeated freezing and thawing.

Images



Western Blotting

Image 1. Western Blot analysis of HFE expression in transfected 293T cell line by HFE MaxPab polyclonal antibody.

Lane 1: HFE transfected lysate(40.10 KDa).

Lane 2: Non-transfected lysate.