



[Go to Product page](#)

Datasheet for ABIN516437  
**anti-HIC1 antibody (AA 396-453)**

4 Images

Overview

Quantity:	100 µg
Target:	HIC1
Binding Specificity:	AA 396-453
Reactivity:	Human
Host:	Mouse
Clonality:	Monoclonal
Conjugate:	This HIC1 antibody is un-conjugated
Application:	Western Blotting (WB), ELISA, Immunofluorescence (IF)

Product Details

Purpose:	Mouse monoclonal antibody raised against a full length recombinant HIC1.
Immunogen:	HIC1 (NP_006488, 396 a.a. ~ 453 a.a) full length recombinant protein with GST tag. MW of the GST tag alone is 26 KDa.
Sequence:	YKSSSEETGS SEDPSPGGH LEGYPCPHLA YGEPESFGDN LYVCIPCGKG FPSSEQLN
Clone:	1E11
Isotype:	IgG2a
Cross-Reactivity:	Human
Characteristics:	Antibody Reactive Against Recombinant Protein.

## Target Details

Target:	HIC1
Alternative Name:	HIC1 ( <a href="#">HIC1 Products</a> )
Background:	Full Gene Name: hypermethylated in cancer 1 Synonyms: ZBTB29,hic-1
Gene ID:	3090
NCBI Accession:	<a href="#">NM_006497</a>
Pathways:	<a href="#">Positive Regulation of Response to DNA Damage Stimulus</a>

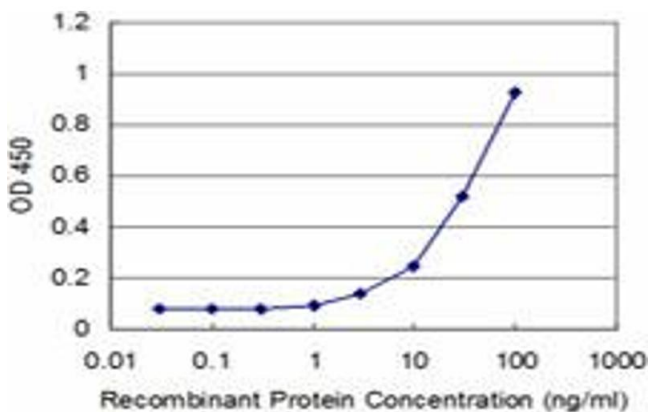
## Application Details

Application Notes:	Optimal working dilution should be determined by the investigator.
Restrictions:	For Research Use only

## Handling

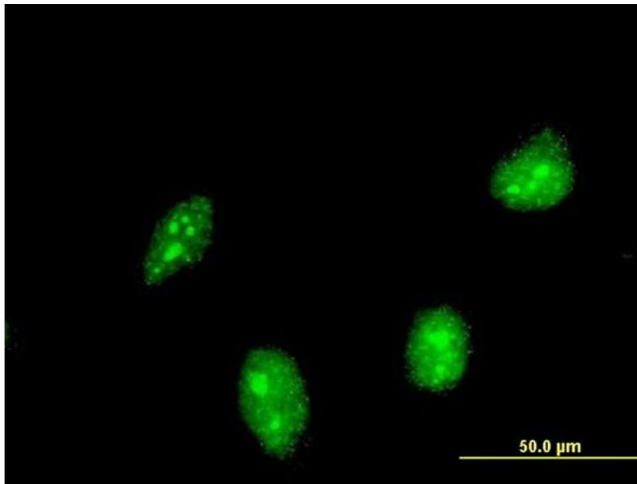
Buffer:	In 1x PBS, pH 7.4
Handling Advice:	Aliquot to avoid repeated freezing and thawing.
Storage:	-20 °C
Storage Comment:	Store at -20°C or lower. Aliquot to avoid repeated freezing and thawing.

## Images



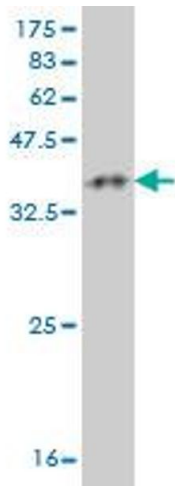
### ELISA

**Image 1.** Detection limit for recombinant GST tagged HIC1 is approximately 3ng/ml as a capture antibody.



### Immunofluorescence

**Image 2.** Immunofluorescence of monoclonal antibody to HIC1 on HeLa cell. [antibody concentration 10 ug/ml]



### Western Blotting

**Image 3.** Western Blot detection against Immunogen (32.38 kDa).

Please check the [product details page](#) for more images. Overall 4 images are available for ABIN516437.