



[Go to Product page](#)

Datasheet for ABIN516463
anti-HLA-A antibody (AA 1-365)

4 Images

Overview

Quantity:	100 µL
Target:	HLA-A
Binding Specificity:	AA 1-365
Reactivity:	Human
Host:	Rabbit
Clonality:	Polyclonal
Conjugate:	This HLA-A antibody is un-conjugated
Application:	Western Blotting (WB), Immunofluorescence (IF), Immunoprecipitation (IP)

Product Details

Purpose:	Rabbit polyclonal antibody raised against a full-length human HLA-A protein.
Immunogen:	HLA-A (NP_002107.3, 1 a.a. ~ 365 a.a) full-length human protein.
Sequence:	MAVMAPRTLL LLLSGALALT QTWAGSHSMR YFFTSVSRPG RGEPRFIAVG YVDDTQFVRF DSDAASQRME PRAPWIEQEG PEYWDQETRN VKAQSQTDRV DLGTLRGYYN QSEAGSHTIQ IMYGCDVGS DGRFLRGYRQD AYDGKDYIAL NEDLRSWTAA DMAAQITKRK WEAHEAEQL RAYLDGTCVE WLRRYLENGK ETLQRTDPPK THMTHHPISD HEATLRCWAL GFYPAEITLT WQRDGEDQTQ DTELVETRPA GDGTFQKWAA VVPSGEEQR YTCHVQHEGL PKPLTLRWEL SSQPTPIVG ILAGLVLLGA VITGAVVA AV MWRRKSSDRK GGSYTAASS DSAQGS DVSL TACKV
Cross-Reactivity:	Human
Characteristics:	Antibody reactive against mammalian transfected lysate.

Target Details

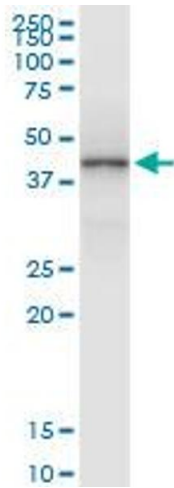
Target:	HLA-A
Alternative Name:	HLA-A (HLA-A Products)
Background:	Full Gene Name: major histocompatibility complex, class I, A Synonyms: HLAA
Gene ID:	3105
NCBI Accession:	NM_002116
Pathways:	TCR Signaling , Regulation of Leukocyte Mediated Immunity , Positive Regulation of Immune Effector Process , Cancer Immune Checkpoints

Application Details

Application Notes:	Optimal working dilution should be determined by the investigator.
Restrictions:	For Research Use only

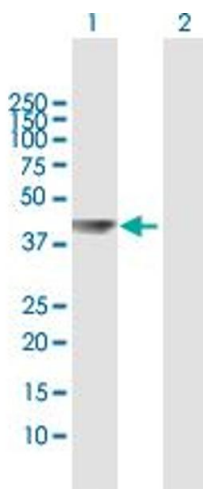
Handling

Format:	Liquid
Buffer:	No additive
Preservative:	Without preservative
Handling Advice:	Aliquot to avoid repeated freezing and thawing.
Storage:	-20 °C
Storage Comment:	Store at -20°C or lower. Aliquot to avoid repeated freezing and thawing.



Immunoprecipitation

Image 1. Immunoprecipitation of HLA-A transfected lysate using anti-HLA-A MaxPab rabbit polyclonal antibody and Protein A Magnetic Bead , and immunoblotted with HLA-A purified MaxPab mouse polyclonal antibody (B01P) .

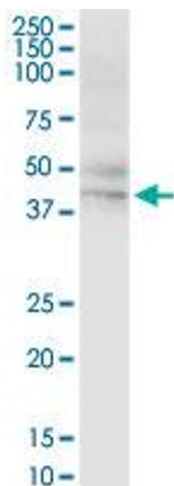


Western Blotting

Image 2. Western Blot analysis of HLA-A expression in transfected 293T cell line by HLA-A MaxPab polyclonal antibody.

Lane 1: HLA-A transfected lysate(40.8 KDa).

Lane 2: Non-transfected lysate.



Western Blotting

Image 3. HLA-A MaxPab rabbit polyclonal antibody. Western Blot analysis of HLA-A expression in human spleen.

Please check the [product details page](#) for more images. Overall 4 images are available for ABIN516463.