

Datasheet for ABIN516469  
**anti-HLA-C antibody (AA 1-366)**



[Go to Product page](#)

2 Images

Overview

Quantity:	100 µL
Target:	HLA-C
Binding Specificity:	AA 1-366
Reactivity:	Human
Host:	Rabbit
Clonality:	Polyclonal
Conjugate:	This HLA-C antibody is un-conjugated
Application:	Western Blotting (WB), Immunoprecipitation (IP)

Product Details

Purpose:	Rabbit polyclonal antibody raised against a full-length human HLA-C protein.
Immunogen:	HLA-C (AAH02463.1, 1 a.a. ~ 366 a.a) full-length human protein.
Sequence:	MRVMAPRTLII LLLSGALALT ETWACSHSMR YFYTAVSRPG RGEPRFIAVG YVDDTQFVRF DSDAASPRGE PRAPWVEQEG PEYWDRETQK YKRQAQTRV SLRNLRGYYN QSEAGSHTLQ WMYGCDLGPD GRLLRGYDQS AYDGKDYIAL NEDLRSWTAA DTAAQITQRK WEAARAAEQQ RAYLEGTCVE WLRRYLENGK ETLQRAEHPK THVTHHLVSD HEATLRCWAL GFYPAEITLT WQRDGEDQTQ DTELVETRPA GDGTFQKWAA VVPSGEEQR YTCHVQHEGL PEPLTLRWEP SSQPTIPIVG IVAGLAVLAV LAVLGAVVAV VMCRRKSSGG KGGSCSQAAS SNSAQGSDES LIACKA
Cross-Reactivity:	Human
Characteristics:	Antibody reactive against mammalian transfected lysate.

## Target Details

Target:	HLA-C
Alternative Name:	HLA-C ( <a href="#">HLA-C Products</a> )
Background:	Full Gene Name: major histocompatibility complex, class I, C Synonyms: D6S204,FLJ27082,HLA-Cw,HLA-Cw12,HLA-JY3,HLC-C,PSORS1
Gene ID:	3107
Pathways:	<a href="#">Regulation of Leukocyte Mediated Immunity</a> , <a href="#">Positive Regulation of Immune Effector Process</a>

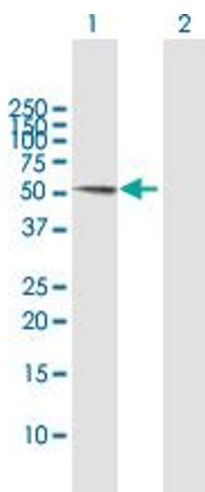
## Application Details

Application Notes:	Optimal working dilution should be determined by the investigator.
Restrictions:	For Research Use only

## Handling

Format:	Liquid
Buffer:	No additive
Preservative:	Without preservative
Handling Advice:	Aliquot to avoid repeated freezing and thawing.
Storage:	-20 °C
Storage Comment:	Store at -20°C or lower. Aliquot to avoid repeated freezing and thawing.

## Images

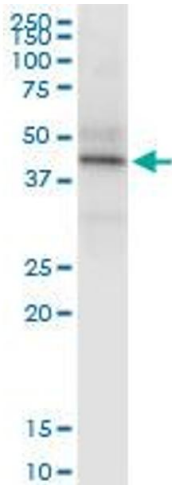


### Western Blotting

**Image 1.** Western Blot analysis of HLA-C expression in transfected 293T cell line by HLA-C MaxPab polyclonal antibody.

Lane 1: HLA-C transfected lysate(40.80 KDa).

Lane 2: Non-transfected lysate.



### Immunoprecipitation

**Image 2.** Immunoprecipitation of HLA-C transfected lysate using anti-HLA-C MaxPab rabbit polyclonal antibody and Protein A Magnetic Bead , and immunoblotted with HLA-C purified MaxPab mouse polyclonal antibody (B01P) .