

Datasheet for ABIN516691  
**anti-HRH1 antibody (AA 312-414)**



[Go to Product page](#)

2 Images

## Overview

Quantity:	100 µg
Target:	HRH1
Binding Specificity:	AA 312-414
Reactivity:	Human
Host:	Mouse
Clonality:	Monoclonal
Conjugate:	This HRH1 antibody is un-conjugated
Application:	ELISA, Proximity Ligation Assay (PLA)

## Product Details

Purpose:	Mouse monoclonal antibody raised against a partial recombinant HRH1.
Immunogen:	HRH1 (NP_000852.1, 312 a.a. ~ 414 a.a) partial recombinant protein with GST tag. MW of the GST tag alone is 26 KDa.
Sequence:	AAAEGSSRDY VAVNRSHGQL KTDEQGLNTH GASEISEDQM LGDSQSFSRT DSDTTTETAP GKGKLRSGSN TGLDYIKFTW KRLRSHSRQY VSGLHMNRER KAA
Clone:	3D1
Isotype:	IgG1
Cross-Reactivity:	Human
Characteristics:	Antibody Reactive Against Recombinant Protein.

## Target Details

Target:	HRH1
Alternative Name:	HRH1 ( <a href="#">HRH1 Products</a> )
Background:	Full Gene Name: histamine receptor H1 Synonyms: H1-R,hisH1
Gene ID:	3269
NCBI Accession:	<a href="#">NM_000861</a>
Pathways:	<a href="#">Regulation of Carbohydrate Metabolic Process</a>

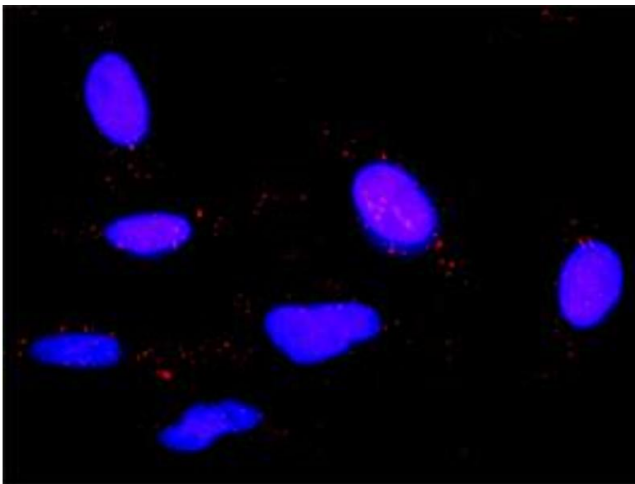
## Application Details

Application Notes:	Optimal working dilution should be determined by the investigator.
Restrictions:	For Research Use only

## Handling

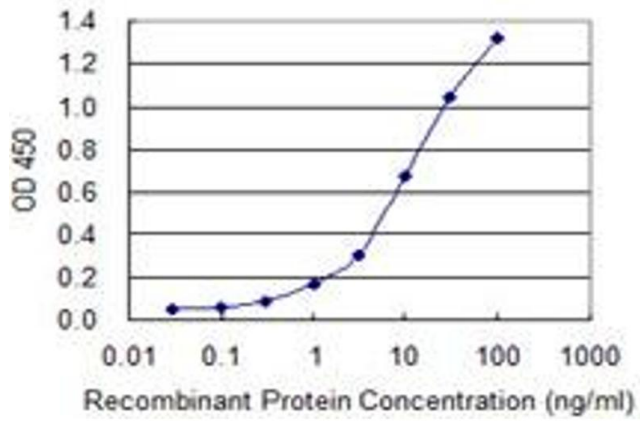
Buffer:	In 1x PBS, pH 7.4
Handling Advice:	Aliquot to avoid repeated freezing and thawing.
Storage:	-20 °C
Storage Comment:	Store at -20°C or lower. Aliquot to avoid repeated freezing and thawing.

## Images



### Proximity Ligation Assay

**Image 1.** Proximity Ligation Analysis of protein-protein interactions between IL6 and HRH1. HeLa cells were stained with anti-IL6 rabbit purified polyclonal 1:1200 and anti-HRH1 mouse monoclonal antibody 1:50. Each red dot represents the detection of protein-protein interaction complex, and nuclei were counterstained with DAPI (blue).



## ELISA

**Image 2.** Detection limit for recombinant GST tagged HRH1 is 0.1 ng/ml as a capture antibody.