



[Go to Product page](#)

Datasheet for ABIN516740  
**anti-HSP27 antibody (AA 96-205)**

6 Images

Overview

Quantity:	100 µg
Target:	HSP27 (HSPB1)
Binding Specificity:	AA 96-205
Reactivity:	Human
Host:	Mouse
Clonality:	Monoclonal
Conjugate:	This HSP27 antibody is un-conjugated
Application:	Western Blotting (WB), ELISA, Immunofluorescence (IF), Immunoprecipitation (IP), Proximity Ligation Assay (PLA)

Product Details

Purpose:	Mouse monoclonal antibody raised against a partial recombinant HSPB1.
Immunogen:	HSPB1 (NP_001531, 96 a.a. ~ 205 a.a) partial recombinant protein with GST tag. MW of the GST tag alone is 26 KDa.
Sequence:	RVSLDVNHFA PDELTVKTKD GVVEITGKHE ERQDEHGYIS RCFTRKYTLP PGVDPTQVSS SLSPEGLTLV EAPMPKLATQ SNEITIPVTF ESRAQLGGPE AAKSDETA AK
Clone:	3G3
Isotype:	IgG2a
Cross-Reactivity:	Human
Characteristics:	Antibody Reactive Against Recombinant Protein.

## Target Details

Target:	HSP27 (HSPB1)
Alternative Name:	HSPB1 ( <a href="#">HSPB1 Products</a> )
Background:	Full Gene Name: heat shock 27 kDa protein 1 Synonyms: CMT2F,DKFZp586P1322,HMN2B,HS.76067,HSP27,HSP28,Hsp25,SRP27
Gene ID:	3315
NCBI Accession:	<a href="#">NM_001540</a>
Pathways:	<a href="#">MAPK Signaling</a> , <a href="#">Regulation of Actin Filament Polymerization</a> , <a href="#">Signaling Events mediated by VEGFR1 and VEGFR2</a> , <a href="#">Negative Regulation of intrinsic apoptotic Signaling</a> , <a href="#">VEGF Signaling</a>

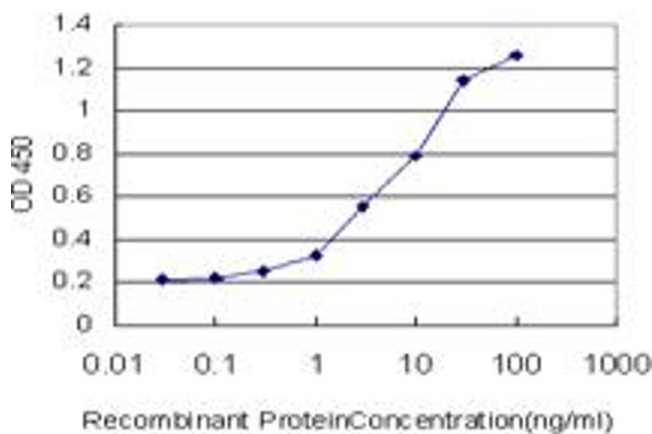
## Application Details

Application Notes:	Optimal working dilution should be determined by the investigator.
Restrictions:	For Research Use only

## Handling

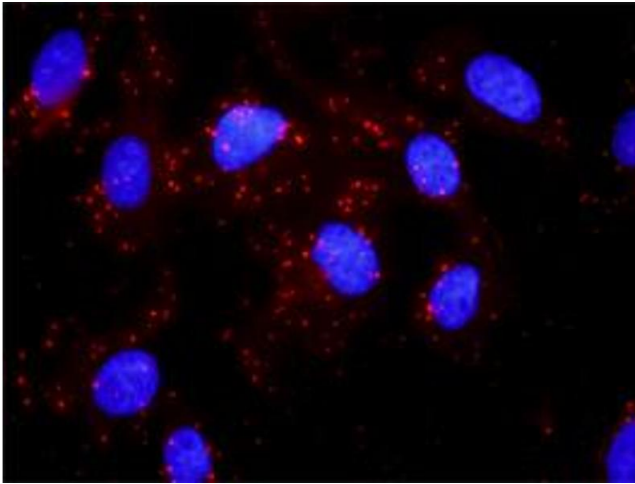
Buffer:	In 1x PBS, pH 7.4
Handling Advice:	Aliquot to avoid repeated freezing and thawing.
Storage:	-20 °C
Storage Comment:	Store at -20°C or lower. Aliquot to avoid repeated freezing and thawing.

## Images



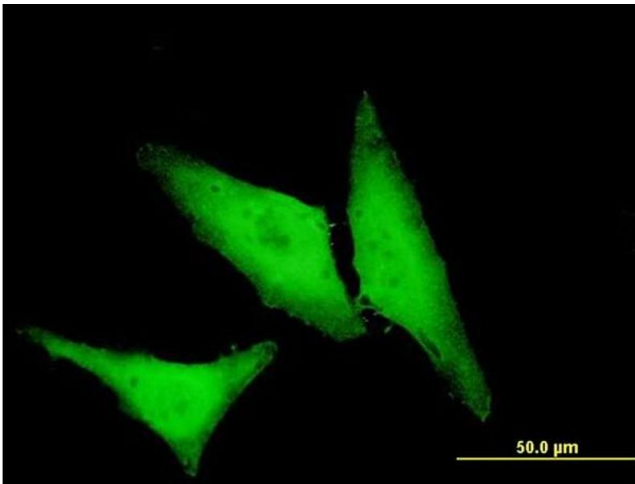
### ELISA

**Image 1.** Detection limit for recombinant GST tagged HSPB1 is approximately 0.1ng/ml as a capture antibody.



### Proximity Ligation Assay

**Image 2.** Proximity Ligation Analysis of protein-protein interactions between AKT1 and HSPB1. Mahlavu cells were stained with anti-AKT1 rabbit purified polyclonal 1:1200 and anti-HSPB1 mouse monoclonal antibody 1:50. Each red dot represents the detection of protein-protein interaction complex, and nuclei were counterstained with DAPI (blue).



### Immunofluorescence

**Image 3.** Immunofluorescence of monoclonal antibody to HSPB1 on HeLa cell. [antibody concentration 10 ug/ml]

Please check the [product details page](#) for more images. Overall 6 images are available for ABIN516740.