



Datasheet for ABIN516741
anti-HSP90AB1 antibody (AA 1-724)



[Go to Product page](#)

3 Images

Overview

Quantity:	100 µg
Target:	HSP90AB1
Binding Specificity:	AA 1-724
Reactivity:	Human
Host:	Rabbit
Clonality:	Polyclonal
Conjugate:	This HSP90AB1 antibody is un-conjugated
Application:	Western Blotting (WB), Proximity Ligation Assay (PLA)

Product Details

Purpose:	Rabbit polyclonal antibody raised against a full-length human HSP90AB1 protein.
Immunogen:	HSP90AB1 (NP_031381.2, 1 a.a. ~ 724 a.a) full-length human protein.
Sequence:	MPEEVHHGEE EVETFAPQAE IAQLMSLIIN TFYSNKEIFL RELISNASDA LDKIRYESLT DPSKLDGSGKE LKIDIIPNPQ ERTLTLVDTG IGMTKADLIN NLGTIAKSGT KAFMEALQAG ADISMIGQFG VGFYSAYLVA EKVVVITKHN DDEQYAWESS AGGSFTVRAD HGEPiGRGTK VILHLKEDQT EYLEERRVKE VVKKHSQFIG YPITLYLEKE REKEISDDEA EEEKGEKEEE DKDDEEKPKI EDVGSDEEDD SGKDKKKKTK KIKEKYIDQE ELNKTPIWT RNPDDITQEE YGEFYKSLTN DWEDHLAVKH FSVEGQLEFR ALLFIPRRAP FDLFENKSKK NNIKLYVRRV FIMDSCDELI PEYLNfirGV VDSEDLPLNI SREMLQQSKI LKVIRKNIVK KCLELFSELA EDKENYKKFY EAFSKNLKLG IHEDSTNRRR LSELLRYHTS QSGDEMTSLS EYVSRMKETQ KSIYYITGES KEQVANSFAV ERVRKRGFEV VYMTEPIDEY CVQQLKEFDG KSLVSVTKEG LELPEDEEEK KKMEESKAKF ENLCKLMKEI LDKKVEKVTI SNRLVSSPCC IVTSTYGWTA

Product Details

NMERIMKAQA LRDNSTMGYM MAKKHLEINP DHPIVETLRQ KAEADKNDKA VKDLVLLFE
TALLSSGFSL EDPQTHSNRI YRMIKLGGLI DEDEVAAEEP NAAVPDEIPP LEGDEDASRM EEVD

Cross-Reactivity: Human

Characteristics: Antibody reactive against mammalian transfected lysate.

Target Details

Target: HSP90AB1

Alternative Name: HSP90AB1 ([HSP90AB1 Products](#))

Background: Full Gene Name: heat shock protein 90 kDa alpha (cytosolic), class B member 1
Synonyms: D6S182,FLJ26984,HSP90-BETA,HSP90B,HSPC2,HSPCB

Gene ID: 3326

NCBI Accession: [NM_007355](#)

Pathways: [Regulation of Cell Size](#)

Application Details

Application Notes: Optimal working dilution should be determined by the investigator.

Restrictions: For Research Use only

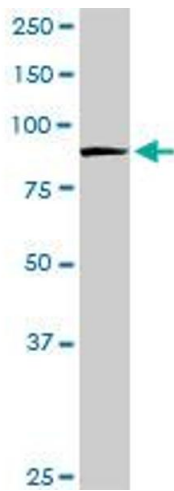
Handling

Buffer: In 1x PBS, pH 7.4

Handling Advice: Aliquot to avoid repeated freezing and thawing.

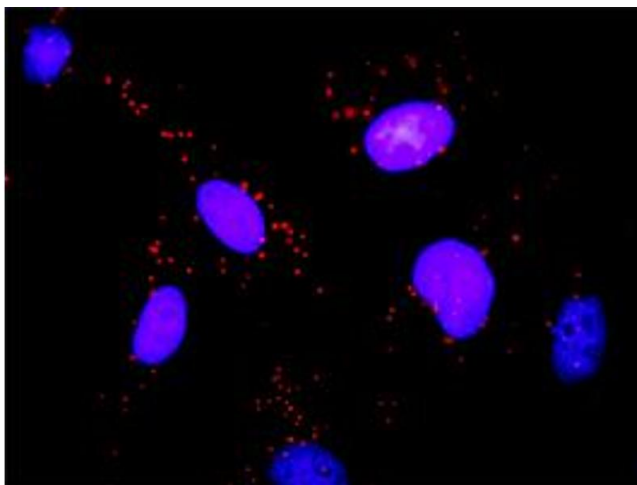
Storage: -20 °C

Storage Comment: Store at -20°C or lower. Aliquot to avoid repeated freezing and thawing.



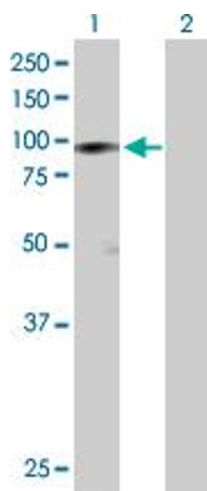
Western Blotting

Image 1. HSP90AB1 MaxPab rabbit polyclonal antibody. Western Blot analysis of HSP90AB1 expression in HeLa.



Proximity Ligation Assay

Image 2. Proximity Ligation Analysis of protein-protein interactions between HSP90AB1 and FLNA. HeLa cells were stained with anti-HSP90AB1 rabbit purified polyclonal 1:1200 and anti-FLNA mouse monoclonal antibody 1:50. Each red dot represents the detection of protein-protein interaction complex, and nuclei were counterstained with DAPI (blue).



Western Blotting

Image 3. Western Blot analysis of HSP90AB1 expression in transfected 293T cell line by HSP90AB1 MaxPab polyclonal antibody.

Lane 1: HSP90AB1 transfected lysate(83.30 KDa).

Lane 2: Non-transfected lysate.