



[Go to Product page](#)

Datasheet for ABIN516743

anti-HSPD1 antibody (AA 1-573)

5 Images

Overview

Quantity:	50 µg
Target:	HSPD1
Binding Specificity:	AA 1-573
Reactivity:	Human
Host:	Mouse
Clonality:	Polyclonal
Conjugate:	This HSPD1 antibody is un-conjugated
Application:	Western Blotting (WB), Immunofluorescence (IF)

Product Details

Purpose:	Mouse polyclonal antibody raised against a full-length human HSPD1 protein.
Immunogen:	HSPD1 (NP_002147.2, 1 a.a. ~ 573 a.a) full-length human protein.
Sequence:	MLRLPTVFRQ MRPVSRVLAP HLTRAYAKDV KFGADARALM LQGVDLLADA VAVTMGPKGR TVIIEQSWGGS PKVTKDGVTV AKSIDLKDKY KNIGAKLVQD VANNTNEEAG DGTTTATVLA RSIAKEGFEEK ISKGANPVEI RRGVMLAVDA VIAELKKQSK PVTTPEEIAQ VATISANGDK EIGNIISDAM KKVGRKGVIT VKDGKTLNDE LEIIEGMKFD RGYISPYFIN TSKGQKCEFQ DAYVLLSEKK ISSIQSIVPA LEIANHRKP LVIIAEDVDG EALSTLVLNR LKVGLQVVAV KAPGFGDNRK NQLKDMAIAT GGAVFGEEGL TLNLEDVQPH DLGKVGEVIV TKDDAMLLKG KGDKAQIEKR IQEIEQLDV TTSEYEKEKL NERLAKLSDG VAVLKVGGTS DVEVNEKKDR VTDALNATRA AVEEGIVLGG GCALLRCIPA LDSLTPANED QKIGIEIHKR TLKIPAMTIA KNAGVEGSLI VEKIMQSSSE VGYDAMAGDF VNMVEKGIID PTKVVRTALL DAAGVASLLT TAEVVVTEIP KEEKDPGMGA MGGMGGGMGG GMF

Product Details

Cross-Reactivity:	Human
Characteristics:	Antibody reactive against mammalian transfected lysate.

Target Details

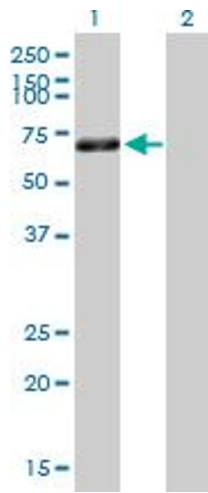
Target:	HSPD1
Alternative Name:	HSPD1 (HSPD1 Products)
Background:	Full Gene Name: heat shock 60 kDa protein 1 (chaperonin) Synonyms: CPN60,GROEL,HLD4,HSP60,HSP65,HuCHA60,SPG13
Gene ID:	3329
NCBI Accession:	NM_002156
Pathways:	Activation of Innate immune Response , Regulation of Leukocyte Mediated Immunity , Positive Regulation of Immune Effector Process , Production of Molecular Mediator of Immune Response , Positive Regulation of Endopeptidase Activity

Application Details

Application Notes:	Optimal working dilution should be determined by the investigator.
Restrictions:	For Research Use only

Handling

Buffer:	In 1x PBS, pH 7.4
Handling Advice:	Aliquot to avoid repeated freezing and thawing.
Storage:	-20 °C
Storage Comment:	Store at -20°C or lower. Aliquot to avoid repeated freezing and thawing.

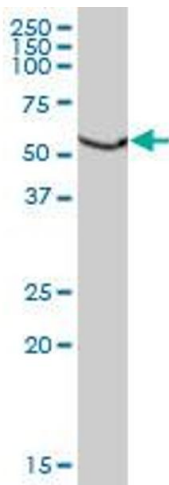


Western Blotting

Image 1. Western Blot analysis of HSPD1 expression in transfected 293T cell line by HSPD1 MaxPab polyclonal antibody.

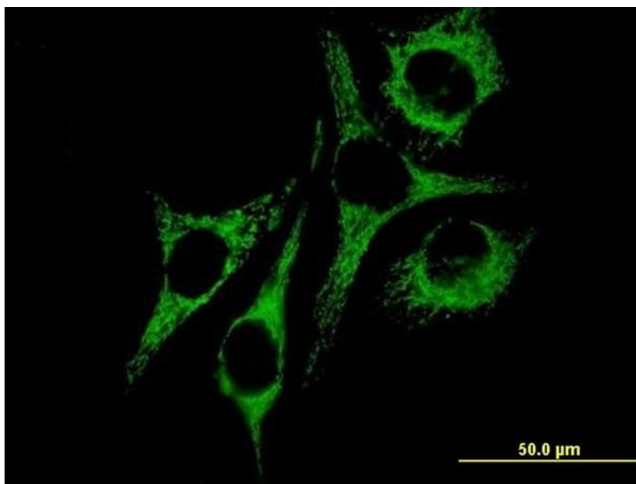
Lane 1: HSPD1 transfected lysate(63.03 KDa).

Lane 2: Non-transfected lysate.



Western Blotting

Image 2. HSPD1 MaxPab polyclonal antibody. Western Blot analysis of HSPD1 expression in human kidney.



Immunofluorescence

Image 3. Immunofluorescence of purified MaxPab antibody to HSPD1 on HeLa cell. [antibody concentration 10 ug/ml]

Please check the [product details page](#) for more images. Overall 5 images are available for ABIN516743.