



Datasheet for ABIN516782
anti-ID1 antibody (AA 1-155)



[Go to Product page](#)

2 Images

Overview

Quantity:	50 µg
Target:	ID1
Binding Specificity:	AA 1-155
Reactivity:	Human
Host:	Mouse
Clonality:	Polyclonal
Conjugate:	This ID1 antibody is un-conjugated
Application:	Western Blotting (WB), Immunofluorescence (IF)

Product Details

Purpose:	Mouse polyclonal antibody raised against a full-length human ID1 protein.
Immunogen:	ID1 (NP_002156.2, 1 a.a. ~ 155 a.a) full-length human protein.
Sequence:	MKVASGSTAT AAAGPSCALK AGKTASGAGE VVRCLSEQSV AISRCAGGAG ARLPALLDEQ QVNVLLYDMN GCYSRLKELV PTLPQNRKVS KVEILQHVID YIRDLQLELN SESEVGTGG RGLPVRAPLS TLNGEISALT AEAACVPADD RILCR
Cross-Reactivity:	Human
Characteristics:	Antibody reactive against mammalian transfected lysate.

Target Details

Target:	ID1
---------	-----

Target Details

Alternative Name:	ID1 (ID1 Products)
Background:	Full Gene Name: inhibitor of DNA binding 1, dominant negative helix-loop-helix protein Synonyms: ID,bHLHb24
Gene ID:	3397
NCBI Accession:	NM_002165

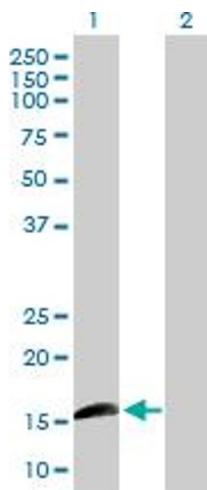
Application Details

Application Notes:	Optimal working dilution should be determined by the investigator.
Restrictions:	For Research Use only

Handling

Buffer:	In 1x PBS, pH 7.4
Handling Advice:	Aliquot to avoid repeated freezing and thawing.
Storage:	-20 °C
Storage Comment:	Store at -20°C or lower. Aliquot to avoid repeated freezing and thawing.

Images

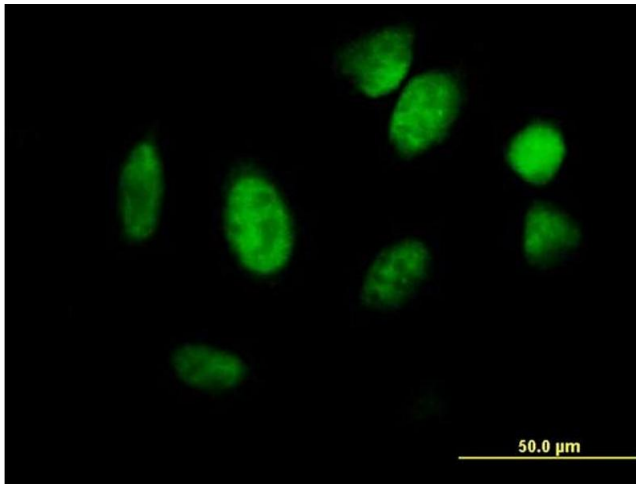


Western Blotting

Image 1. Western Blot analysis of ID1 expression in transfected 293T cell line by ID1 MaxPab polyclonal antibody.

Lane 1: ID1 transfected lysate(17.05 KDa).

Lane 2: Non-transfected lysate.



Immunofluorescence

Image 2. Immunofluorescence of purified MaxPab antibody to ID1 on HeLa cell. [antibody concentration 10 ug/ml]