



[Go to Product page](#)

Datasheet for ABIN516794
anti-Id2 antibody (AA 1-134)

1 Image

Overview

Quantity:	100 µg
Target:	Id2
Binding Specificity:	AA 1-134
Reactivity:	Human
Host:	Rabbit
Clonality:	Polyclonal
Conjugate:	This Id2 antibody is un-conjugated
Application:	Western Blotting (WB)

Product Details

Purpose:	Rabbit polyclonal antibody raised against a full-length human ID2 protein.
Immunogen:	ID2 (AAH30639, 1 a.a. ~ 134 a.a) full-length human protein.
Sequence:	MKAFSPVRSV RKNSLSDHSL GISRSKTPVD DPMSLLYMN DCYSKCLKELV PSIPQNKKVS KMEILQHVID YILDQLIALD SHPTIVSLHH QRPQGNQASR TPLTTLNTDI SILSLQASEF PSELMNSDSK ALCG
Cross-Reactivity:	Human
Characteristics:	Antibody reactive against mammalian transfected lysate.

Target Details

Target:	Id2
---------	-----

Target Details

Alternative Name:	ID2 (Id2 Products)
Background:	Full Gene Name: inhibitor of DNA binding 2, dominant negative helix-loop-helix protein Synonyms: GIG8,ID2A,ID2H,MGC26389,bHLHb26
Gene ID:	3398

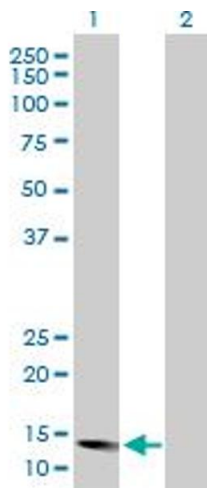
Application Details

Application Notes:	Optimal working dilution should be determined by the investigator.
Restrictions:	For Research Use only

Handling

Buffer:	In 1x PBS, pH 7.4
Handling Advice:	Aliquot to avoid repeated freezing and thawing.
Storage:	-20 °C
Storage Comment:	Store at -20°C or lower. Aliquot to avoid repeated freezing and thawing.

Images



Western Blotting

Image 1. Western Blot analysis of ID2 expression in transfected 293T cell line by ID2 MaxPab polyclonal antibody.

Lane 1: ID2 transfected lysate(14.85 KDa).

Lane 2: Non-transfected lysate.