



[Go to Product page](#)

Datasheet for ABIN516802
anti-IDH2 antibody (AA 1-452)

1 Image

Overview

Quantity:	100 µL
Target:	IDH2
Binding Specificity:	AA 1-452
Reactivity:	Human
Host:	Rabbit
Clonality:	Polyclonal
Conjugate:	This IDH2 antibody is un-conjugated
Application:	Immunoprecipitation (IP)

Product Details

Purpose:	Rabbit polyclonal antibody raised against a full-length human IDH2 protein.
Immunogen:	IDH2 (NP_002159.2, 1 a.a. ~ 452 a.a) full-length human protein.
Sequence:	MAGYLRVWRS LCRASGSRPA WAPAALTAPT SQEQPRRHYA DKRIKVAKPV VEMDGDDEMTR IIWQFIKEKL ILPHVDIQLK YFDLGLPNRD QTDDQVTIDS ALATQKYSVA VKCATITPDE ARVEEFKLLK MWKSPNGTIR NILGGTVFRE PIICKNIPRL VPGWTKPITI GRHAHGDQYK ATDFVADRAG TFKMVFTPDK GSGVKEWEVY NFPAGGVGMG MYNTDESISG FAHSCFQYAI QKKWPLYMST KNTILKAYDG RFKDIFQEIF DKHYKTDGDK NKIWIYEHRLI DDMVAQVLKS SGGFVWACKN YDGDVQSDIL AQGFGSLGLM TSVLVCPDGK TIEAEEAHGT VTRHYREHQK GRPTSTNPIA SIFAWTRGLE HRGKLDGNQD LIRFAQMLEK VCVETVESGA MTKDLAGCIH GLSNVKLNEH FLNTTDFLDT IKSNDRALG RQ
Cross-Reactivity:	Human

Product Details

Characteristics: Antibody reactive against mammalian transfected lysate.

Target Details

Target: IDH2

Alternative Name: IDH2 ([IDH2 Products](#))

Background: Full Gene Name: isocitrate dehydrogenase 2 (NADP+), mitochondrial
Synonyms: ICD-M, IDH, IDHM, IDP, IDPM, mNADP-IDH

Gene ID: 3418

NCBI Accession: [NM_002168](#)

Pathways: [Warburg Effect](#)

Application Details

Application Notes: Optimal working dilution should be determined by the investigator.

Restrictions: For Research Use only

Handling

Format: Liquid

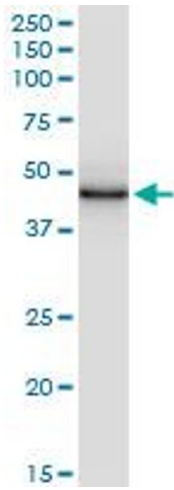
Buffer: No additive

Preservative: Without preservative

Handling Advice: Aliquot to avoid repeated freezing and thawing.

Storage: -20 °C

Storage Comment: Store at -20°C or lower. Aliquot to avoid repeated freezing and thawing.



Immunoprecipitation

Image 1. Immunoprecipitation of IDH2 transfected lysate using anti-IDH2 MaxPab rabbit polyclonal antibody and Protein A Magnetic Bead , and immunoblotted with IDH2 monoclonal antibody (M01), clone 5F11 .