



[Go to Product page](#)

Datasheet for ABIN516807

## anti-IDH3G antibody (AA 1-393)

### 2 Images

#### Overview

Quantity:	50 µg
Target:	IDH3G
Binding Specificity:	AA 1-393
Reactivity:	Human
Host:	Mouse
Clonality:	Polyclonal
Conjugate:	This IDH3G antibody is un-conjugated
Application:	Western Blotting (WB)

#### Product Details

Purpose:	Mouse polyclonal antibody raised against a full-length human IDH3G protein.
Immunogen:	IDH3G (NP_004126.1, 1 a.a. ~ 393 a.a) full-length human protein.
Sequence:	MALKVATVAG SAAKAVLGPA LLCRPWEVLG AHEVPSRNIF SEQTIPPSAK YGGRHTVTMI PGDGIGPELM LHVKS VFRHA CVPVDFEEVH VSSNADEEDI RNAIMAIRRN RVALKGNIET NHNLPSSHKS RNNILRTSLD LYANVIHCKS LPGVVTRHKD IDILIVRENT EGEYSSLEHE SVAGVVESLK IITKAKSLRI AEYAFKLAQE SGRKKVTAVH KANIMKLG DG LFLQCCREVA ARYPQITFEN MIVDNTTMQL VSRPQQFDVM VMPNLYGNIV NNVCAGLVGG PGLVAGANYG HVYAVFETAT RNTGKSIANK NIANPTATLL ASCMMLDHLK LHSYATSIRK AVLASMDNEN MHTPDIGGQG TTSEAIQDVI RHIRVINGRA VEA
Cross-Reactivity:	Human, Rat
Characteristics:	Antibody reactive against mammalian transfected lysate.

## Target Details

Target:	IDH3G
Alternative Name:	IDH3G ( <a href="#">IDH3G Products</a> )
Background:	Full Gene Name: isocitrate dehydrogenase 3 (NAD+) gamma Synonyms: H-IDHG
Gene ID:	3421
NCBI Accession:	<a href="#">NM_004135</a>

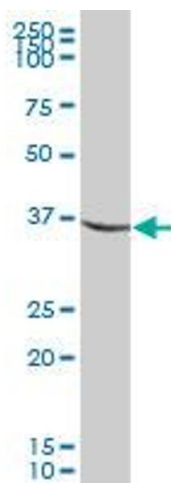
## Application Details

Application Notes:	Optimal working dilution should be determined by the investigator.
Restrictions:	For Research Use only

## Handling

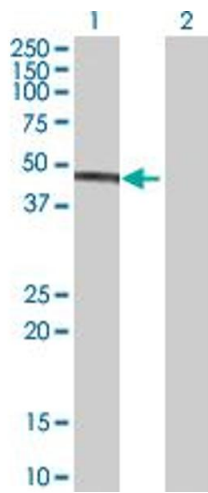
Buffer:	In 1x PBS, pH 7.4
Handling Advice:	Aliquot to avoid repeated freezing and thawing.
Storage:	-20 °C
Storage Comment:	Store at -20°C or lower. Aliquot to avoid repeated freezing and thawing.

## Images



### Western Blotting

**Image 1.** IDH3G MaxPab polyclonal antibody. Western Blot analysis of IDH3G expression in rat brain.



### Western Blotting

**Image 2.** Western Blot analysis of IDH3G expression in transfected 293T cell line by IDH3G MaxPab polyclonal antibody.

Lane 1: IDH3G transfected lysate(43.23 KDa).

Lane 2: Non-transfected lysate.