



[Go to Product page](#)

Datasheet for ABIN516810  
**anti-IDI1 antibody (AA 1-228)**

2 Images

Overview

Quantity:	100 µg
Target:	IDI1
Binding Specificity:	AA 1-228
Reactivity:	Human
Host:	Rabbit
Clonality:	Polyclonal
Conjugate:	This IDI1 antibody is un-conjugated
Application:	Western Blotting (WB)

Product Details

Purpose:	Rabbit polyclonal antibody raised against a full-length human IDI1 protein.
Immunogen:	IDI1 (AAH57827.1, 1 a.a. ~ 228 a.a) full-length human protein.
Sequence:	MMPEINTNHL DKQVQLLAE MCILIDENDN KIGAETKKNC HLNENIEKGL LHRAFSVFLF NTENKLLLQ RSDAKITFPG CFTNTCCSHP LSNPAELEES DALGVRRAAQ RRLKAELGIP LEEVPPEEIN YLTRIHYKAQ SDGIWGEHEI DYILLVRKNV TLNPDNEIK SYCYVSKEEL KELLKKAASG EIKITPWFKI IAATFLFKWW DNLNHLNQFV DHEKIYRM
Cross-Reactivity:	Human
Characteristics:	Antibody reactive against mammalian transfected lysate.

Target Details

Target:	IDI1
---------	------

## Target Details

Alternative Name:	IDI1 ( <a href="#">IDI1 Products</a> )
Background:	Full Gene Name: isopentenyl-diphosphate delta isomerase 1 Synonyms: IPP1,IPPI1
Gene ID:	3422

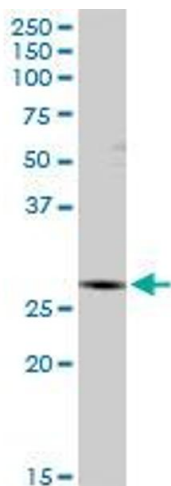
## Application Details

Application Notes:	Optimal working dilution should be determined by the investigator.
Restrictions:	For Research Use only

## Handling

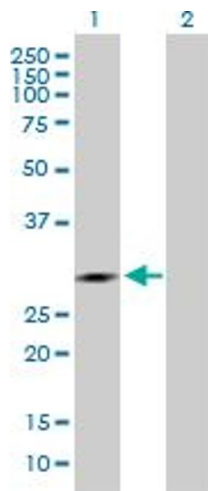
Buffer:	In 1x PBS, pH 7.4
Handling Advice:	Aliquot to avoid repeated freezing and thawing.
Storage:	-20 °C
Storage Comment:	Store at -20°C or lower. Aliquot to avoid repeated freezing and thawing.

## Images



### Western Blotting

**Image 1.** IDI1 MaxPab rabbit polyclonal antibody. Western Blot analysis of IDI1 expression in IMR-32.



### Western Blotting

**Image 2.** Western Blot analysis of IDI1 expression in transfected 293T cell line by IDI1 MaxPab polyclonal antibody.

Lane 1: IDI1 transfected lysate(26.50 KDa).

Lane 2: Non-transfected lysate.