



[Go to Product page](#)

Datasheet for ABIN516905
anti-IFNA16 antibody (AA 1-189)

2 Images

Overview

Quantity:	100 µg
Target:	IFNA16
Binding Specificity:	AA 1-189
Reactivity:	Human
Host:	Rabbit
Clonality:	Polyclonal
Conjugate:	This IFNA16 antibody is un-conjugated
Application:	Western Blotting (WB)

Product Details

Purpose:	Rabbit polyclonal antibody raised against a full-length human IFNA16 protein.
Immunogen:	IFNA16 (NP_002164.1, 1 a.a. ~ 189 a.a) full-length human protein.
Sequence:	MALSFLLMA VLVLSYKSIC SLGCDLPQTH SLGNRRALIL LAQMGRISHF SCLKDRYDFG FPQEVFDGNQ FQKAQAISAF HEMIQQTFNL FSTKDSSAAW DETLLDKFYI ELFQQLNDLE ACVTQEVGVE EIALMNEDSI LAVRKYFQRI TLYLMGKKYS PCAWEVVRAE IMRSFSFSTN LQKGLRRKD
Cross-Reactivity:	Human, Rat
Characteristics:	Antibody reactive against mammalian transfected lysate.

Target Details

Target:	IFNA16
---------	--------

Target Details

Alternative Name:	IFNA16 (IFNA16 Products)
Background:	Full Gene Name: interferon, alpha 16 Synonyms:
Gene ID:	3449
NCBI Accession:	NM_002173
Pathways:	JAK-STAT Signaling , Hepatitis C

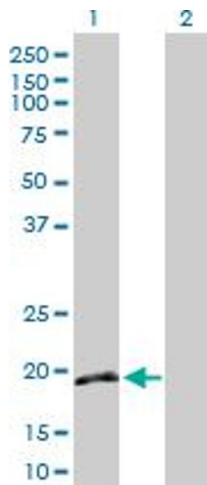
Application Details

Application Notes:	Optimal working dilution should be determined by the investigator.
Restrictions:	For Research Use only

Handling

Buffer:	In 1x PBS, pH 7.4
Handling Advice:	Aliquot to avoid repeated freezing and thawing.
Storage:	-20 °C
Storage Comment:	Store at -20°C or lower. Aliquot to avoid repeated freezing and thawing.

Images

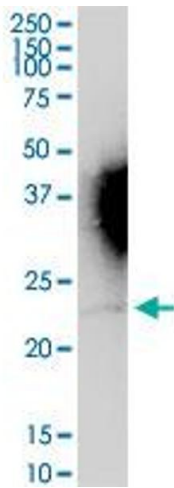


Western Blotting

Image 1. Western Blot analysis of IFNA16 expression in transfected 293T cell line by IFNA16 MaxPab polyclonal antibody.

Lane 1: IFNA16 transfected lysate(21.70 KDa).

Lane 2: Non-transfected lysate.



Western Blotting

Image 2. IFNA16 MaxPab rabbit polyclonal antibody.
Western Blot analysis of IFNA16 expression in rat brain.