



[Go to Product page](#)

Datasheet for ABIN516941
anti-IGF2 antibody (AA 1-180)

2 Images

Overview

Quantity:	100 µg
Target:	IGF2
Binding Specificity:	AA 1-180
Reactivity:	Human
Host:	Rabbit
Clonality:	Polyclonal
Conjugate:	This IGF2 antibody is un-conjugated
Application:	Western Blotting (WB)

Product Details

Purpose:	Rabbit polyclonal antibody raised against a full-length human IGF2 protein.
Immunogen:	IGF2 (NP_000603.1, 1 a.a. ~ 180 a.a) full-length human protein.
Sequence:	MGIPMGKSML VLLTFLAFAS CCIAAYRPSE TLCGGELVDT LQFVCGDRGF YFSRPASRVS RRSRGIVEEC CFRSCDLALL ETYCATPAKS ERDVSTPPTV LPDNFPRYPV GKFFQYDTWK QSTQRLRRGL PALLRARRGH VLAKELEAFR EAKRHRPLIA LPTQDPAHGG APPEMASNRK
Cross-Reactivity:	Human
Characteristics:	Antibody reactive against mammalian transfected lysate.

Target Details

Target:	IGF2
---------	------

Target Details

Alternative Name: IGF2 ([IGF2 Products](#))

Background: Full Gene Name: insulin-like growth factor 2 (somatomedin A)
Synonyms: C11orf43,FLJ22066,FLJ44734,INSIGF,pp9974

Gene ID: 3481

NCBI Accession: [NM_000612](#)

Pathways: [Hormone Activity](#), [Regulation of Hormone Metabolic Process](#), [Regulation of Hormone Biosynthetic Process](#), [Regulation of Carbohydrate Metabolic Process](#), [Activated T Cell Proliferation](#)

Application Details

Application Notes: Optimal working dilution should be determined by the investigator.

Restrictions: For Research Use only

Handling

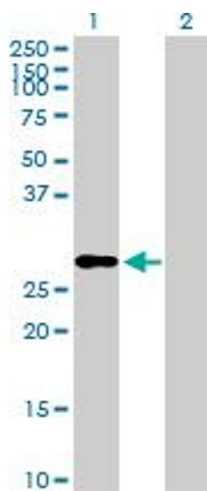
Buffer: In 1x PBS, pH 7.4

Handling Advice: Aliquot to avoid repeated freezing and thawing.

Storage: -20 °C

Storage Comment: Store at -20°C or lower. Aliquot to avoid repeated freezing and thawing.

Images

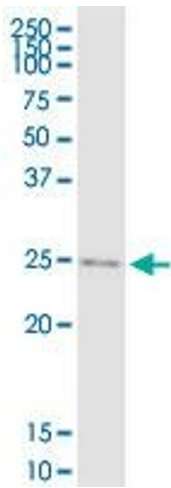


Western Blotting

Image 1. Western Blot analysis of IGF2 expression in transfected 293T cell line by IGF2 MaxPab polyclonal antibody.

Lane 1: IGF2 transfected lysate(20.10 KDa).

Lane 2: Non-transfected lysate.



Western Blotting

Image 2. IGF2 MaxPab rabbit polyclonal antibody. Western Blot analysis of IGF2 expression in HeLa S3 NE.