



[Go to Product page](#)

Datasheet for ABIN516942
anti-IGFBP1 antibody (AA 160-259)

2 Images

Overview

Quantity:	100 µg
Target:	IGFBP1
Binding Specificity:	AA 160-259
Reactivity:	Human
Host:	Mouse
Clonality:	Monoclonal
Conjugate:	This IGFBP1 antibody is un-conjugated
Application:	Western Blotting (WB), ELISA

Product Details

Purpose:	Mouse monoclonal antibody raised against a partial recombinant IGFBP1.
Immunogen:	IGFBP1 (NP_000587, 160 a.a. ~ 259 a.a) partial recombinant protein with GST tag. MW of the GST tag alone is 26 KDa.
Sequence:	GSKALHVTNI KKWKEPCRIE LYRVVESLAK AQETSGEEIS KFYLPNCNKN GFYHSRQCET SMDGEAGLCW CVYPWNGKRI PGSPEIRGDP NCQIYFNVQN
Clone:	2F9
Isotype:	IgG2a
Cross-Reactivity:	Human
Characteristics:	Antibody Reactive Against Recombinant Protein.

Target Details

Target: IGFBPI

Alternative Name: IGFBP1 ([IGFBPI Products](#))

Background: Full Gene Name: insulin-like growth factor binding protein 1
Synonyms: AFBP,IBP1,IGF-BP25,PP12,hIGFBP-1

Gene ID: 3484

NCBI Accession: [NM_000596](#)

Pathways: [Myometrial Relaxation and Contraction](#), [ER-Nucleus Signaling](#), [Growth Factor Binding](#)

Application Details

Application Notes: Optimal working dilution should be determined by the investigator.

Restrictions: For Research Use only

Handling

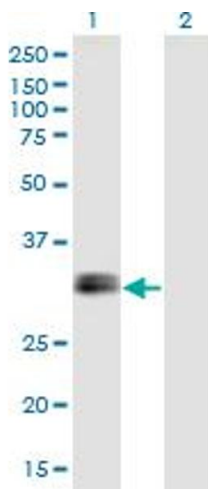
Buffer: In 1x PBS, pH 7.4

Handling Advice: Aliquot to avoid repeated freezing and thawing.

Storage: -20 °C

Storage Comment: Store at -20°C or lower. Aliquot to avoid repeated freezing and thawing.

Images

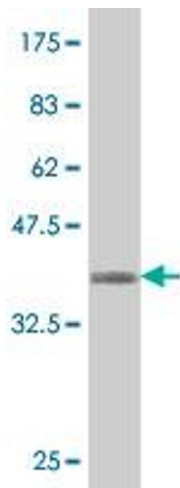


Western Blotting

Image 1. Western Blot analysis of IGFBP1 expression in transfected 293T cell line by IGFBP1 monoclonal antibody (M01), clone 2F9.

Lane 1: IGFBP1 transfected lysate (Predicted MW: 27.9 KDa).

Lane 2: Non-transfected lysate.



Western Blotting

Image 2. Western Blot detection against Immunogen (36.74 kDa).