



[Go to Product page](#)

Datasheet for ABIN516944
anti-IGFBP2 antibody (AA 1-328)

1 Image

Overview

Quantity:	50 µg
Target:	IGFBP2
Binding Specificity:	AA 1-328
Reactivity:	Human
Host:	Mouse
Clonality:	Polyclonal
Conjugate:	This IGFBP2 antibody is un-conjugated
Application:	Western Blotting (WB)

Product Details

Purpose:	Mouse polyclonal antibody raised against a full-length human IGFBP2 protein.
Immunogen:	IGFBP2 (NP_000588.2, 1 a.a. ~ 328 a.a) full-length human protein.
Sequence:	MLPRVGCPAL PLPPPPLLPL LPLLLLLLGA SGGGGGARAE VLFRCPPCTP ERLAACGPPP VAPPAAVA AV AGGARMPCAE LVREPGCGCC SVCARLEGEA CGVYTPRCGQ GLRCYPHPGS ELPLQALVMG EGTCEKRRDA EYGASPEQVA DNGDDHSEGG LVENHVDSTM NMLGGGGSAG RKPLKSGMKE LAVFREKVTE QHRQMKGKGGK HHLGLEEPPK LRPPTARTPC QQELDQVLER ISTMRLPDER GPLEHLYSLH IPNCDKHGLY NLKQCKMSLN GQRGECWCVN PNTGKLIQGA PTIRGDPECH LFYNEQQEAR GVHTQRMQ
Cross-Reactivity:	Human
Characteristics:	Antibody reactive against mammalian transfected lysate.

Target Details

Target:	IGFBP2
Alternative Name:	IGFBP2 (IGFBP2 Products)
Background:	Full Gene Name: insulin-like growth factor binding protein 2, 36 kDa Synonyms: IBP2,IGF-BP53
Gene ID:	3485
NCBI Accession:	NM_000597
Pathways:	Myometrial Relaxation and Contraction , Growth Factor Binding , Activated T Cell Proliferation

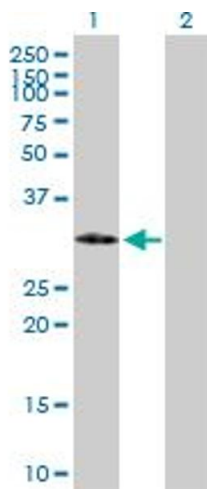
Application Details

Application Notes:	Optimal working dilution should be determined by the investigator.
Restrictions:	For Research Use only

Handling

Buffer:	In 1x PBS, pH 7.4
Handling Advice:	Aliquot to avoid repeated freezing and thawing.
Storage:	-20 °C
Storage Comment:	Store at -20°C or lower. Aliquot to avoid repeated freezing and thawing.

Images



Western Blotting

Image 1. Western Blot analysis of IGFBP2 expression in transfected 293T cell line by IGFBP2 MaxPab polyclonal antibody.

Lane 1: IGFBP2 transfected lysate(36.08 KDa).

Lane 2: Non-transfected lysate.