



[Go to Product page](#)

Datasheet for ABIN516946
anti-IGFBP3 antibody (AA 1-291)

2 Images

Overview

Quantity:	100 µg
Target:	IGFBP3
Binding Specificity:	AA 1-291
Reactivity:	Human
Host:	Rabbit
Clonality:	Polyclonal
Conjugate:	This IGFBP3 antibody is un-conjugated
Application:	Western Blotting (WB), Immunofluorescence (IF)

Product Details

Purpose:	Rabbit polyclonal antibody raised against a full-length human IGFBP3 protein.
Immunogen:	IGFBP3 (AAH64987.1, 1 a.a. ~ 291 a.a) full-length human protein.
Sequence:	<p>MQRARPTLWA AALTLLVLLR GPPVARAGAS SAGLGPVVRV EPCDARALAQ CAPPPAVCAE LVREPGCGCC LTCALSEGQP CGIYTERCGS GLRCQPSPDE ARPLQALLDG RGLCVNASAV SRLRAYLLPA PPAPGNASES EEDRSAGSVE SPSVSSTHRV SDPKFHPLHS KIIIIKKGHA KDSQRYKVDY ESQSTDTQNF SSESKRETEY GPCRREMEDT LNHLKFLNVL SPRGVHIPNC DKKGFYKKKQ CRPSKGRKRG FCWCVDKYGQ PLPGYTTKKG EDVHCYSMQS K</p>
Cross-Reactivity:	Human
Characteristics:	Antibody reactive against mammalian transfected lysate.

Target Details

Target:	IGFBP3
Alternative Name:	IGFBP3 (IGFBP3 Products)
Background:	Full Gene Name: insulin-like growth factor binding protein 3 Synonyms: BP-53,IBP3
Gene ID:	3486
NCBI Accession:	NM_000598
Pathways:	Myometrial Relaxation and Contraction , Regulation of Muscle Cell Differentiation , Skeletal Muscle Fiber Development , Regulation of Carbohydrate Metabolic Process , Autophagy , Smooth Muscle Cell Migration , Growth Factor Binding

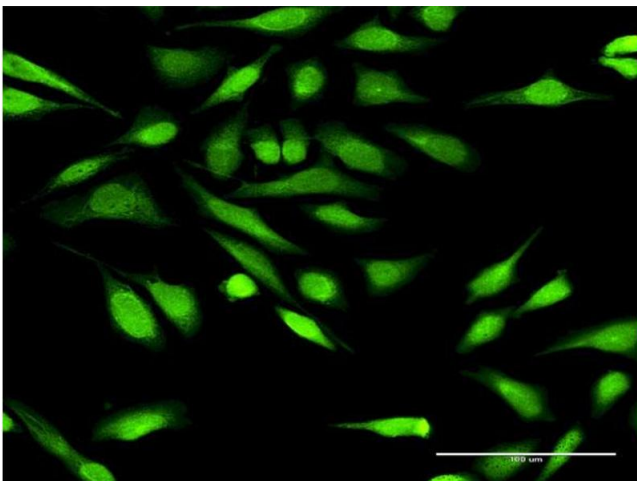
Application Details

Application Notes:	Optimal working dilution should be determined by the investigator.
Restrictions:	For Research Use only

Handling

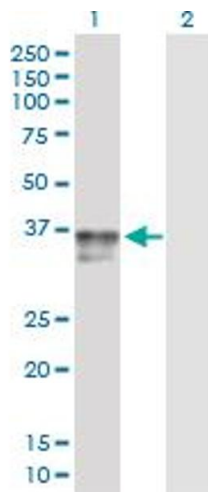
Buffer:	In 1x PBS, pH 7.4
Handling Advice:	Aliquot to avoid repeated freezing and thawing.
Storage:	-20 °C
Storage Comment:	Store at -20°C or lower. Aliquot to avoid repeated freezing and thawing.

Images



Immunofluorescence

Image 1. Immunofluorescence of purified MaxPab antibody to IGFBP3 on HeLa cell. [antibody concentration 20 ug/ml]



Western Blotting

Image 2. Western Blot analysis of IGFBP3 expression in transfected 293T cell line by IGFBP3 MaxPab polyclonal antibody.

Lane 1: IGFBP3 transfected lysate(31.70 KDa).

Lane 2: Non-transfected lysate.