

Datasheet for ABIN516953
anti-IGHA2 antibody (AA 1-477)



[Go to Product page](#)

1 Image

Overview

Quantity:	100 µg
Target:	IGHA2
Binding Specificity:	AA 1-477
Reactivity:	Human
Host:	Rabbit
Clonality:	Polyclonal
Conjugate:	This IGHA2 antibody is un-conjugated
Application:	Western Blotting (WB)

Product Details

Purpose:	Rabbit polyclonal antibody raised against a full-length human IGHA2 protein.
Immunogen:	IGHA2 (AAH73765.1, 1 a.a. ~ 477 a.a) full-length human protein.
Sequence:	MKHLWFFLLL VAAPRWVLSQ VQLQESGPGI VKPSETLSLT CTVSGGSISS YYWSWIRQTA GKGLEWIGYI SHSGSTTYNP SLKSRVTLSL DTSKNQFSLR LNSVTAADTA VYYCAHGSSW DFAFDYWGQG TLVTVSSASP TSPKVFPLSL DSTPQDGNVV VACLVQGGFFP QEPLSVTWSE SGQNVTARNF PPSQDASGDL YTTSSQLTLP ATQCPDGKSV TCHVKHYTNP SQDVTVPCPV PPPPCCHPR LSLHRPALED LLLGSEANLT CTLTGLRDAS GATFTWTPSS GKSAVQGPPE RDLGCGYSVS SVLPGCAQPW NHGETFTCTA AHPELKTPLT ANITKSGNTF RPEVHLLPPP SEELALNELV TLTCLARGFS PKDVLVRWLQ GSQELPREKY LTWASRQEPS QGTTTTFAVTS ILRVAEDWK KGDTFSCMVG HEALPLAFTQ KTIDRLAGKP THVNVSVVMA EVDGTCY
Cross-Reactivity:	Human

Product Details

Characteristics: Antibody reactive against mammalian transfected lysate.

Target Details

Target: IGHA2

Alternative Name: IGHA2 ([IGHA2 Products](#))

Background: Full Gene Name: immunoglobulin heavy constant alpha 2 (A2m marker)
Synonyms:

Gene ID: 3494

Application Details

Application Notes: Optimal working dilution should be determined by the investigator.

Restrictions: For Research Use only

Handling

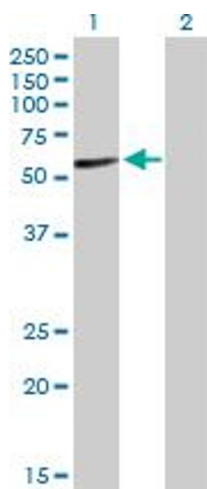
Buffer: In 1x PBS, pH 7.4

Handling Advice: Aliquot to avoid repeated freezing and thawing.

Storage: -20 °C

Storage Comment: Store at -20°C or lower. Aliquot to avoid repeated freezing and thawing.

Images



Western Blotting

Image 1. Western Blot analysis of IGHA2 expression in transfected 293T cell line by IGHA2 MaxPab polyclonal antibody.

Lane 1: IGHA2 transfected lysate(51.60 kDa).

Lane 2: Non-transfected lysate.