

Datasheet for ABIN516958
anti-IGHG4 antibody (AA 1-473)



[Go to Product page](#)

2 Images

Overview

Quantity:	50 µg
Target:	IGHG4
Binding Specificity:	AA 1-473
Reactivity:	Human
Host:	Mouse
Clonality:	Polyclonal
Conjugate:	This IGHG4 antibody is un-conjugated
Application:	Western Blotting (WB)

Product Details

Purpose:	Mouse polyclonal antibody raised against a full-length human IGHG4 protein.
Immunogen:	IGHG4 (AAH25985.1, 1 a.a. ~ 473 a.a) full-length human protein.
Sequence:	MDLLCKNMKH LWFFLLLVA PRWVLSRLQL QESGPGLLKP SVTSLTCTV SGDSVASSSY YWGWVRQPPG KGLEWIGTIN FSGNMYSPS LRSRVMSAD MSENSFYKLK DSVTAADTAV YYCAAGHLMV GFGAHWGQ GK LSVSPASTK GPSVFPLAPC SRSTSESTAA LGCLVKDYFP EPVTVSWNSG ALTSGVHTFP AVLQSSGLYS LSSVTVPSS SLGTKTYTCN VDHKPSNTKV DKRVESKYGP PCPSCAPEF LGGPSVFLFP PKPKDTLMIS RTPEVTCVVV DVSQEDPEVQ FNWYVDGVEV HNAKTKPREE QFNSTYRVVS VLTVLHQDWL NGKEYKCKVS NKGLPSSIEK TISKAKGQPR EPQVYTLPPS QEEMTKNQVS LTCLVKGFYP SDIAVEWESN GPENNYKTT PPVLDSGDSF FLYSRLTVDK SRWQEGNVFS CSVMHEALHN HYTKLSLS LGK
Cross-Reactivity:	Human

Product Details

Characteristics: Antibody reactive against mammalian transfected lysate.

Target Details

Target: IGHG4

Alternative Name: IGHG4 ([IGHG4 Products](#))

Background: Full Gene Name: immunoglobulin heavy constant gamma 4 (G4m marker)
Synonyms: MGC117419

Gene ID: 3503

Application Details

Application Notes: Optimal working dilution should be determined by the investigator.

Restrictions: For Research Use only

Handling

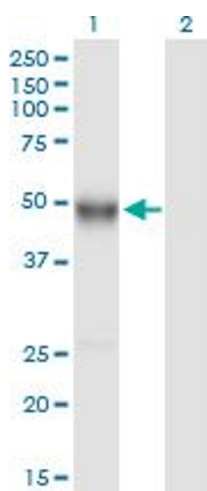
Buffer: In 1x PBS, pH 7.4

Handling Advice: Aliquot to avoid repeated freezing and thawing.

Storage: -20 °C

Storage Comment: Store at -20°C or lower. Aliquot to avoid repeated freezing and thawing.

Images

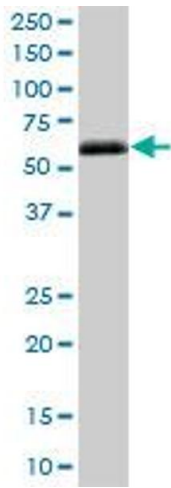


Western Blotting

Image 1. Western Blot analysis of IGHG4 expression in transfected 293T cell line by IGHG4 MaxPab polyclonal antibody.

Lane 1: IGHG4 transfected lysate(52.03 kDa).

Lane 2: Non-transfected lysate.



Western Blotting

Image 2. IGHG4 MaxPab polyclonal antibody. Western Blot analysis of IGHG4 expression in human spleen.