



[Go to Product page](#)

Datasheet for ABIN516970  
**anti-IgL antibody (AA 1-232)**

2 Images

Overview

Quantity:	50 µg
Target:	IgL
Binding Specificity:	AA 1-232
Reactivity:	Human
Host:	Mouse
Clonality:	Polyclonal
Conjugate:	This IgL antibody is un-conjugated
Application:	Western Blotting (WB)

Product Details

Purpose:	Mouse polyclonal antibody raised against a full-length human IGL@ protein.
Immunogen:	IGL@ (AAH89414.1, 1 a.a. ~ 232 a.a) full-length human protein.
Sequence:	MAWTPLLLPL LTFCTVSEAS YDLTQPPSVS VSPGQTARIT CSGDALPRKY AFWYQQKSGQ APVLVIYEDS KRPSGIPERF SGSSSGTMAT LTISGAQVED EGDYYCYSTD ISGYPVFGGG TKVTVLGQPK AAPSVTLFPP SSEELQANKA TLVCLISDFY PGAVTVAWKA DSSPVKAGVE TTTPSKQSNN KYAASSYLSL TPEQWRSHKS YSCQVTHEGS TVEKTVAPTE CS
Cross-Reactivity:	Human
Characteristics:	Antibody reactive against mammalian transfected lysate.

Target Details

Target:	IgL
---------	-----

## Target Details

Alternative Name:	IGL@ (IgL Products)
Background:	Full Gene Name: immunoglobulin lambda locus Synonyms: IGL,MGC88804
Gene ID:	3535

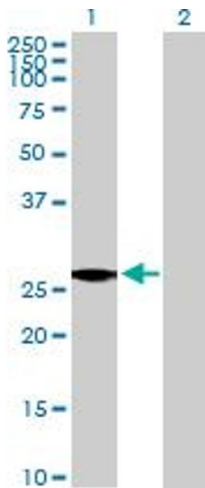
## Application Details

Application Notes:	Optimal working dilution should be determined by the investigator.
Restrictions:	For Research Use only

## Handling

Buffer:	In 1x PBS, pH 7.4
Handling Advice:	Aliquot to avoid repeated freezing and thawing.
Storage:	-20 °C
Storage Comment:	Store at -20°C or lower. Aliquot to avoid repeated freezing and thawing.

## Images

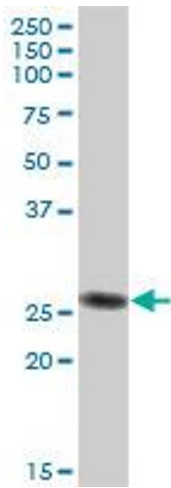


### Western Blotting

**Image 1.** Western Blot analysis of IGL@ expression in transfected 293T cell line by IGL@ MaxPab polyclonal antibody.

Lane 1: IGL@ transfected lysate(25.52 KDa).

Lane 2: Non-transfected lysate.



### Western Blotting

**Image 2.** IGL@ MaxPab polyclonal antibody. Western Blot analysis of IGL@ expression in human liver.