



Datasheet for ABIN516977
anti-IGSF1 antibody (AA 220-310)



[Go to Product page](#)

3 Images

Overview

Quantity:	100 µg
Target:	IGSF1 (INHBP)
Binding Specificity:	AA 220-310
Reactivity:	Human
Host:	Mouse
Clonality:	Monoclonal
Conjugate:	This IGSF1 antibody is un-conjugated
Application:	Western Blotting (WB), ELISA

Product Details

Purpose:	Mouse monoclonal antibody raised against a partial recombinant IGSF1.
Immunogen:	IGSF1 (NP_001546, 220 a.a. ~ 310 a.a) partial recombinant protein with GST tag. MW of the GST tag alone is 26 KDa.
Sequence:	VVAGLYPKPT LTAHPGPIMA PGESLNLRCQ GPIYGMTFAL MRVEDLEKSF YHKKTIKNEA NFFFQSLKIQ DTGHYLCFY DASYRGSLLS D
Clone:	4C7
Isotype:	IgG2a
Cross-Reactivity:	Human, Rat
Characteristics:	Antibody Reactive Against Recombinant Protein.

Target Details

Target:	IGSF1 (INHBP)
Alternative Name:	IGSF1 (INHBP Products)
Background:	Full Gene Name: immunoglobulin superfamily, member 1 Synonyms: IGCD1,IGDC1,INHBP,KIAA0364,MGC75490,PGSF2
Gene ID:	3547
NCBI Accession:	NM_001555

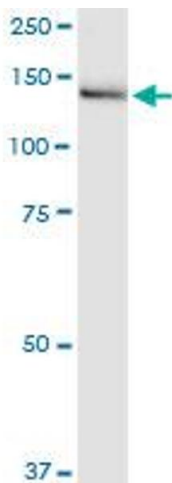
Application Details

Application Notes:	Optimal working dilution should be determined by the investigator.
Restrictions:	For Research Use only

Handling

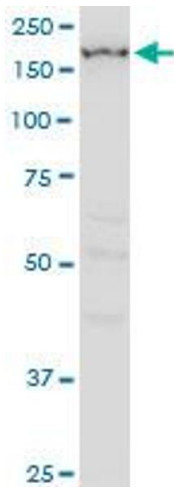
Buffer:	In 1x PBS, pH 7.4
Handling Advice:	Aliquot to avoid repeated freezing and thawing.
Storage:	-20 °C
Storage Comment:	Store at -20°C or lower. Aliquot to avoid repeated freezing and thawing.

Images



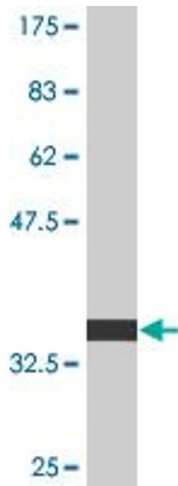
Western Blotting

Image 1. IGSF1 monoclonal antibody (M01), clone 4C7.
Western Blot analysis of IGSF1 expression in rat brain.



Western Blotting

Image 2. IGSF1 monoclonal antibody (M01), clone 4C7. Western Blot analysis of IGSF1 expression in HeLa.



Western Blotting

Image 3. Western Blot detection against Immunogen (35.75 kDa).