

Datasheet for ABIN516986  
**anti-IKBKB antibody (AA 3-120)**

## 4 Images

[Go to Product page](#)

## Overview

Quantity:	100 µg
Target:	IKBKB
Binding Specificity:	AA 3-120
Reactivity:	Human
Host:	Mouse
Clonality:	Monoclonal
Conjugate:	This IKBKB antibody is un-conjugated
Application:	ELISA, Western Blotting (WB), Proximity Ligation Assay (PLA)

## Product Details

Purpose:	Mouse monoclonal antibody raised against a partial recombinant IKBKB.
Immunogen:	IKBKB (AAH06231, 3 a.a. ~ 120 a.a) partial recombinant protein with GST tag. MW of the GST tag alone is 26 KDa.
Sequence:	WSPSLTTQTC GAWEMKERLG TGGFGNVIRW HNQETGEQIA IKQCRQELSP RNRERWCLEI QIMRRLTHPN VVAARDVPEG MQNLAPNDLP LLAMEYCQGG DLRKYLNQFE NCCGLREG
Clone:	1A3
Isotype:	IgG2a
Cross-Reactivity:	Human
Characteristics:	Antibody Reactive Against Recombinant Protein.

## Target Details

Target:	IKBKB
Alternative Name:	IKBKB ( <a href="#">IKBKB Products</a> )
Background:	Full Gene Name: inhibitor of kappa light polypeptide gene enhancer in B-cells, kinase beta Synonyms: FLJ40509,IKK-beta,IKK2,IKKB,MGC131801,NFKBIKB
Gene ID:	3551
Pathways:	<a href="#">NF-kappaB Signaling</a> , <a href="#">RTK Signaling</a> , <a href="#">TCR Signaling</a> , <a href="#">TLR Signaling</a> , <a href="#">Fc-epsilon Receptor Signaling Pathway</a> , <a href="#">Neurotrophin Signaling Pathway</a> , <a href="#">Activation of Innate immune Response</a> , <a href="#">Production of Molecular Mediator of Immune Response</a> , <a href="#">Hepatitis C</a> , <a href="#">Toll-Like Receptors Cascades</a> , <a href="#">BCR Signaling</a> , <a href="#">Ubiquitin Proteasome Pathway</a> , <a href="#">S100 Proteins</a>

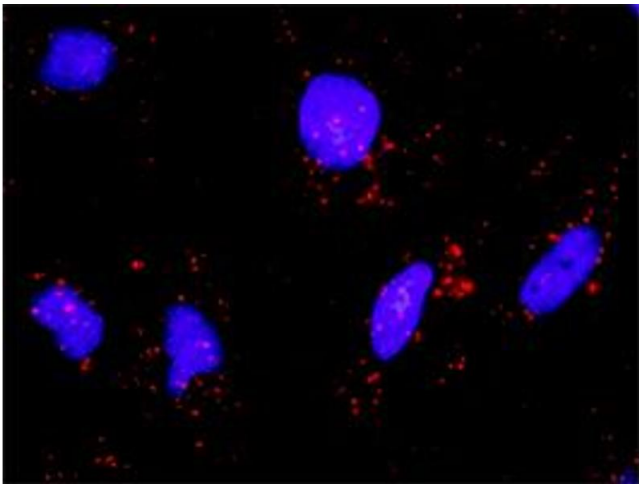
## Application Details

Application Notes:	Optimal working dilution should be determined by the investigator.
Restrictions:	For Research Use only

## Handling

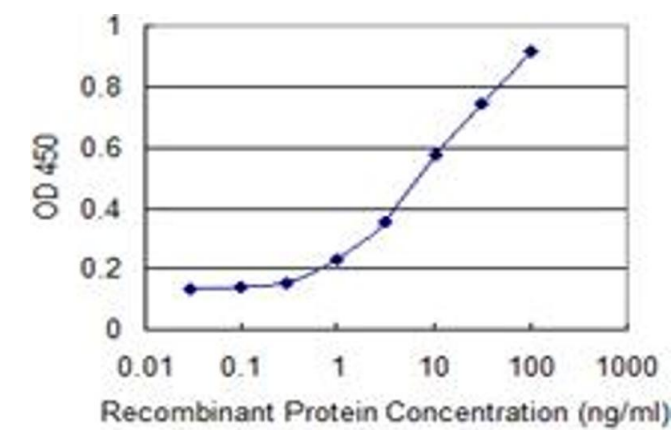
Buffer:	In 1x PBS, pH 7.4
Handling Advice:	Aliquot to avoid repeated freezing and thawing.
Storage:	-20 °C
Storage Comment:	Store at -20°C or lower. Aliquot to avoid repeated freezing and thawing.

## Images



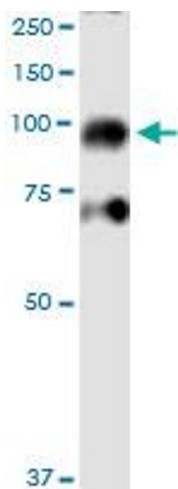
### Proximity Ligation Assay

**Image 1.** Proximity Ligation Analysis of protein-protein interactions between BIRC3 and IKBKB. HeLa cells were stained with anti-BIRC3 rabbit purified polyclonal 1:1200 and anti-*IKBKB* mouse monoclonal antibody 1:50. Each red dot represents the detection of protein-protein interaction complex, and nuclei were counterstained with DAPI (blue).



#### ELISA

**Image 2.** Detection limit for recombinant GST tagged IKBKB is 0.3 ng/ml as a capture antibody.



#### Western Blotting

**Image 3.** IKBKB monoclonal antibody (M04), clone 1A3. Western Blot analysis of IKBKB expression in IMR-32.

Please check the [product details page](#) for more images. Overall 4 images are available for ABIN516986.